



Dublin ✓



London ✓



Oxford ✓



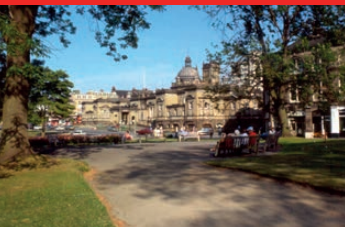
Edinburgh ✓



Leeds ✓



Worthing ✓



Harrogate ✓



CENTRE OF ENGLISH STUDIES

2018 AGENT HANDBOOK

NEW COURSES 2018

- **IELTS EXPRESS**
Super Intensive 2 week course
- **English and Culture**
50's + Programme
- **CES/NCUK University**
Pre-Sessional English Programme

Important Contacts

Dublin

Justin Quinn

Managing Director
justin@ces-schools.com

Jonathan Quinn

Marketing Director
jonathan@ces-schools.com

Gaye McLoughlin

Office Manager
gaye@ces-schools.com

Agija Liepina Horan

Marketing Executive
agi@ces-schools.com

Peter Loftus

Director of Studies
dos@ces-schools.com

Paul Corbett

Examinations Manager
paul@ces-schools.com

Marian Costello

Accommodation Officer
confirm@ces-schools.com

Emergency Phone: 00353 87 229 2415

UK

Michael Quinn

UK Director
michael@ces-schools.com

London

David Morgan

Principal
david@ces-schools.com

Luke Rogers

Director of Studies
wimbledondos@ces-schools.com

Akvile Merkevičiute

Accommodation Officer
akvile@ces-schools.com

Emergency Phone: 0044 7790 899612

Oxford

Peter Williams

Principal
oxfordprincipal@ces-schools.com

Julie Reid

Accommodation Officer
oxfordaccommodation@ces-schools.com

Emergency Phone: 0044 7972 584674

Edinburgh

Janet Galbraith

Principal
edinburghprincipal@ces-schools.com

Johnathan Cockayne

Marketing Executive
jcockayne@ces-schools.com

Valerie Reynolds

Head of Teacher Training
edinburghteachertraining@ces-schools.com

Andrea Donnelly

Registrar
edinburghregistrar@ces-schools.com

Emergency Phone: 0044 798 461 1450

Leeds

Robert Tuck

Principal
leedsprincipal@ces-schools.com

Aidan Curley

Director of Studies
Leedsdos@ces-schools.com

Lynn Dockerty

Registrar
leedsregistrar@ces-schools.com

Samantha Howard

Accommodation Officer
leedsaccommodation@ces-schools.com

Emergency Phone: 0044 753 846 2164

Worthing

Nick Clark

Principal and UK Operations Manager
nick@ces-schools.com

Nicola Solly-Flood

Director of Studies
worthingdos@ces-schools.com

Victoria Greco

Senior Registrar
registrar@ces-schools.com

Sarah Angers

Accommodation Officer
accom3@ces-schools.com

Emergency Phone: 0044 7875 617403

Harrogate

Alex Mackenzie

Principal
harrogateprincipal@ces-schools.com

Lisa Campbell

Director of Studies
harrogatedos@ces-schools.com

Paul Elwen

Examinations Manager CES Leeds/CES Harrogate
examsleeds@ces-schools.com

Michelle Wilson

Registrar
harrogateregistrar@ces-schools.com

Emergency Phone: 0044 7762 628943

Contents

Important Contacts	1
Contents	2-3
Why Choose CES?	4

Section One - CES Locations

CES Dublin	5
CES London	6
CES Oxford	7
CES Edinburgh	8
CES Leeds	9
CES Worthing	10
CES Harrogate	11

Section Two - Adult Year-Round Courses

Our Free CES Online e-Learning Package - UK and Ireland	12
All CES Courses Include	13
Standard General English Course - UK and Ireland	14
Intensive General English Course - UK and Ireland	15
Combination Course - UK and Ireland	16
Full-Time IELTS Preparation Course - Ireland	17
General English + IELTS Preparation Course - UK and Ireland	18
IELTS EXPRESS, Super Intensive Course - UK and Ireland	NEW FOR 2018 19
Cambridge Examination Preparation Courses - UK and Ireland	20
Cambridge FCE Fast Track Preparation Course	21
General English with Business English - UK and Ireland	22
English for Professionals Course - UK and Ireland	23
English Language + Work Experience	24
Long Term / Multi Destination Course	25
CES/ NCUK University Pre-Sessional English Programme	NEW FOR 2018 26
English and Culture, 50's + Programme	NEW FOR 2018 27
Combination English with Teacher Training Focus - UK and Ireland	28
English for Teachers: Methodology and Language Development	29
English for Teachers: CLIL - UK and Ireland	30
English for Teachers: Blended Learning - UK and Ireland	31
English for Teachers: Language Development for Teachers - UK and Ireland	32

Section Three - Adult Accommodation Options

Homestay Accommodation Information - UK and Ireland	33
Residential Accommodation - Ireland	34
Residential Accommodation - CES London	35
Residential Accommodation - CES Edinburgh and CES Leeds	36

Section Four - Junior Summer and Winter Courses

Junior English Language + Activity Summer Course – UK and Ireland	39
Junior English Language + Activity Summer Course - CES Edinburgh	40
Ruskin College, Oxford Junior Summer Residential Course	41
Junior Super Intensive Summer Course – CES Dublin, CES Leeds and CES Worthing	42
Junior Cambridge Fast Track Summer course – CES Dublin	42
Junior English Language + Rugby Summer Course - Ireland	43
CES and Worthing College - Mini College Programme	44
High School Placement Course - UK and Ireland	45
Junior Stage Programme Winter Option - CES Dublin	46
Junior Stage Programme Winter Option - CES London and CES Oxford	47
Junior Stage Programme Winter Option - CES Edinburgh	48
Junior Stage Programme Winter Option - CES Leeds and CES Worthing	49
Junior Stage Programme Winter Option - CES Harrogate	50

Section Five - General Terms and Conditions

Adult Terms and Conditions	51-52
Junior Terms and Conditions	53

Why Choose CES?



Dublin



London



Oxford



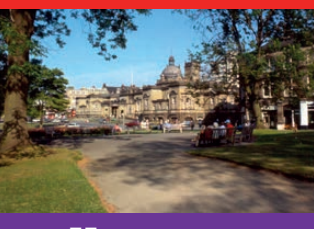
Edinburgh



Leeds



Worthing



Harrogate

Care Excellence Success

- » Choice of 7 wonderful locations in the UK and Ireland
- » Family run business with a personal touch
- » International reputation for quality teaching and staff friendliness
- » All CES schools in England have been graded 'Exceeds Expectations' by the ISI
- » CES Dublin is an official IELTS, Pearson PTE, Cambridge and Trinity Exam Centre
- » CES Leeds and CES Harrogate are official IELTS and Cambridge Exam Centres
- » CES Edinburgh and CES Leeds are official CELTA Training Centres
- » Students from over 85 countries worldwide
- » Excellent facilities
- » FREE Wi-Fi in all centres
- » FREE CES online e-Learning package
- » Customized buildings in fantastic locations
- » Multi-award winning school
- » Competitively priced courses
- » Excellent, carefully selected homestay accommodation
- » Residential accommodation available
- » Exciting and comprehensive year-round social programmes

“ Over 39 years' experience in helping students improve their English skills ”

CES Dublin



Key Selling Points

- » 40 classroom Campus right in the heart of Dublin city centre
- » On the same street as *Dublin Castle*, *Temple Bar* and *Trinity College*
- » Official IELTS, Pearson PTE, Cambridge and Trinity Exam Centre
- » IALC, EAQUALS, MEI and ACELS accredited
- » Homestay and residential accommodation available all year
- » Student café, lounge and roof gardens
- » Free CES online e-Learning package with over 250 hours of English language learning
- » Free Grammar app

CES Dublin Location

“Study in the centre of Europe’s most vibrant city!”

- » CES Dublin is located on the same street as Dublin’s top attractions; *Dublin Castle*, *Trinity College*, *Christchurch Cathedral* and *Temple Bar*.
- » The school is a 5 minute walk from Dublin’s main shopping streets, restaurants, cafés, bars and *St. Stephen’s Green Park*.
- » *St. Patrick’s Cathedral*, *Guinness Storehouse*, *Jameson Whiskey Museum*, *the Spire of Dublin* and *James Joyce* are all within walking distance.
- » Dublin’s top galleries and museums are a stroll from the school, including the *National Gallery of Ireland*, the *Dublin Writers Museum* and Ireland’s *Natural History Museum*.
- » Easily accessed by all forms of public transport.



Useful Links

Tourism:

www.visitdublin.com
www.tourismireland.com
www.discoverireland.ie

Travel:

www.dublinbus.ie
www.irishrail.ie
www.luas.ie
www.dublinbikes.ie

“Top Location in City Centre!”

CES London



Key Selling Points

- » 20 minutes by train from central London
- » Located in one of London's fashionable suburbs, Wimbledon – the home of World famous Tennis Grounds
- » Wimbledon town centre is within a 10 minute walk
- » IALC, British Council and EAQUALS accredited
- » Homestay and residential accommodation available all year with premium host families within walking distance
- » Student lounge and patio garden
- » Free CES online e-Learning package

CES London Location

“Study in the home of the world famous tennis club!”

- » CES London is located in Wimbledon, within a 10 minute walk of the town centre.
- » The school is 20 minutes by train from central London.
- » Wimbledon train station and London transport links are a 10 minute walk away.
- » The school is minutes from Wimbledon's many cosmopolitan shops, restaurants, cafés, theatres and cinemas.
- » Wimbledon's *All England Lawn Tennis Club*, famous tennis museum and *Wimbledon Common Park* are within walking distance.
- » CES London is a short stroll from Wimbledon's fantastic shopping centre, *Centre Court*.



Useful Links

Tourism:

www.visitlondon.com
www.london.com
www.visitbritain.com

Travel:

www.nationalrail.co.uk
www.tubeplanner.com
www.tfl.gov.uk

“ Learn it, Live it, Love it! ”

CES Oxford

Key Selling Points

- » Located in the beautiful village of Wheatley
- » Maximum of 9 students per class
- » Self-access facilities open in the evenings for students (Monday - Thursday)
- » British Council Centre of Excellence and member of IALC and English UK
- » Homestay accommodation available all year with most families located within walking distance
- » Stunning student gardens
- » Free CES online e-Learning package



CES Oxford Location

“Study in one of the world’s oldest and most famous university cities!”

- » CES Oxford is located in the tranquil village of Wheatley.
- » The school is on Wheatley’s main street, beside local shops, cafés and restaurants.
- » Wheatley provides a friendly, safe and traditional British village environment.
- » Wheatley is a short bus journey from central Oxford (10 kms).
- » The famous, scenic region of *The Cotswolds* is nearby.
- » Many homestays are within walking distance of the school.

Useful Links

Tourism:

www.visitoxfordandoxfordshire.com
www.oxfordcityguide.com
www.visitbritain.com

Travel:

www.oxfordbus.co.uk
www.nationalrail.co.uk
www.thetrainline.com
www.cycletoursoxford.com

“ The City of Dreaming Spires! ”

CES Edinburgh



Key Selling Points

- » Right in the centre of Edinburgh
- » A short stroll from Princes Street
- » CELTA Training Centre
- » British Council Centre of Excellence and members of IALC and English UK
- » Homestay and residential accommodation available all year
- » Spacious student lounge, private garden and self-access centre
- » Free CES online e-Learning package

CES Edinburgh Location

“Study in one of the world’s most culturally exciting cities!”

- » CES Edinburgh is surrounded by the city’s top tourist hotspots; *Edinburgh Castle*, the *Scottish National Gallery* and the historic *Old Town*.
- » Scotland’s most popular street, *Princes Street*, is a 10 minute walk away.
- » All of the city’s best cafes, pubs, bars and restaurants are a stroll from the school.
- » Edinburgh city’s top galleries and museums are close by.
- » Edinburgh boasts an international airport and great bus & rail links. London is a 4.5 hour train journey. Both *Edinburgh Haymarket* train station and *Edinburgh Waverley* train station are easily accessible from the school.



Useful Links

Tourism:

www.visitscotland.com/destinations-maps/edinburgh-lothians/

Travel:

www.edinburghairport.com
edinburgh.cdmf.info/public/bus/list

“Scotland’s Historic City of Learning!”

CES Leeds



Key Selling Points

- » Right in the heart of Leeds city
- » Vibrant and exciting student city
- » Beautiful Georgian building
- » IALC, British Council and EQUALS accredited
- » Homestay accommodation available all year
- » Student lounge and self-access centre
- » Free CES online e-Learning package

CES Leeds Location

“Study in the Knightsbridge of the North!”

- » CES Leeds is surrounded by Leeds’ top attractions; *Royal Armouries, Harewood House, Leeds’ Tropical World, Thackeray Museum and Leeds City Art Gallery.*
- » Leeds boasts a vibrant student population, a thriving nightlife and live music scene.
- » The school is a 10 minute walk from Leeds’ main shopping area, restaurants, cafés, bars, cinemas, *The Grand Theatre and Opera House Leeds.*
- » The school is a 5 minute walk from Leeds train station.
- » There are regular trains to London, Manchester, Liverpool and Edinburgh. London is only 2.25 hours away by train. Manchester is just over 1 hour by train, Liverpool is 1.5 hours and Edinburgh is 3 hours away by train.



Useful Links

Tourism:

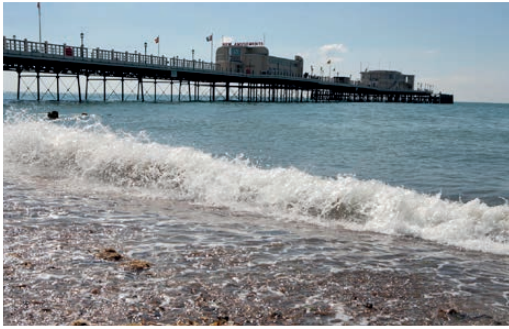
www.visitleeds.co.uk
www.yorkshire.com

Travel:

www.wymetro.com
www.eastcoast.co.uk

“The Heart of North England!”

CES Worthing



Key Selling Points

- » Less than 10 minutes' walk from the beach
- » Safe and tranquil town
- » IALC, British Council and EAQUALS accredited
- » The only British Council accredited school in Worthing
- » Homestay accommodation within walking distance available all year
- » Student lounge and gardens
- » Free CES online e-Learning package

CES Worthing Location

“Study and enjoy England’s sunniest climate!”

- » CES Worthing is a few minutes' walk from Worthing's beautiful beach and pier.
- » All of the shops, cafés and restaurants are within a 5 minute stroll of the school.
- » Worthing train station is a 5 minute walk from the school. There are regular trains to Brighton, London and Portsmouth.
- » Worthing is a 20 minute train ride from Brighton and a 90 minute train ride from central London.
- » There is a direct train link from Gatwick Airport to Worthing.
- » *Chichester, Arundel and South Downs* are all nearby.



Useful Links

Tourism:

www.visitworthing.co.uk
www.visitbritain.com

Travel:

www.nationalrail.co.uk
www.stagecoachbus.com
www.buses.co.uk
www.compass-travel.co.uk
www.metrobus.co.uk

“ Life on the Sunny South Coast! ”

CES Harrogate



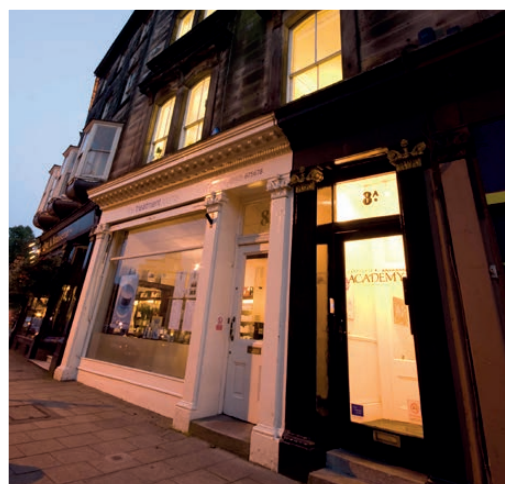
Key Selling Points

- » Right in the heart of traditional Harrogate
- » Maximum of 9 students per class
- » Official IELTS and Cambridge Exam Centre
- » British Council centre of Excellence and member of IALC
- » Homestay accommodation within walking distance available all year
- » Student lounge, canteen and library
- » Free CES online e-Learning package

CES Harrogate Location

“Study in the historic spa town of Harrogate!”

- » CES Harrogate is located in the very centre of the Victorian spa town.
- » CES Harrogate is surrounded by the town’s top attractions; *Betty’s Tea Rooms* and the *Royal Pump Room Museum*.
- » The school is a 5 minute walk from Harrogate’s main shopping area, restaurants, bars and cafes.
- » The spectacular *Yorkshire Dales* are nearby.
- » *Nidderdale*, *Fountains Abbey* and *Studley Royal* are a stone’s throw away from Harrogate.
- » The school is a 10 minute walk from Harrogate train and bus station.
- » There are regular trains to Leeds and York, from where connections can be made to the rest of the UK.



Useful Links

Tourism:

www.visitharrogate.co.uk
www.visitthetownofharrogate.co.uk

Travel:

www.yorkshiretravel.net
www.leedsbradfordairport.co.uk

“The Happiest Town in the UK!”



Online



Study

Get started before you arrive using our skills-based Study Plan - improve your reading/grammar and listening skills with 45 hours of language exercises and familiarise yourself with popular tests using Exam Practice.



Events

See all the exciting social programme activities that are on offer - In all our locations activities are organized to suit everyone.



School

A handy one-stop shop for information related to living abroad - links are provided for transport, accommodation, tourism and much, much more.



Apps

We also have two apps that are available for you free of charge: Front Desk App (all things social and admin) & Grammar App

If you would like more information on the CES Online platform, please contact:
cesonline@ces-schools.com



All CES Courses Include...

- » Maximum class sizes of 14
- » Maximum class sizes in CES Oxford and CES Harrogate of 9 and average of 6
- » Self-access study facilities
- » Additional course materials
- » CES Certificate of Attendance
- » Individual progress report
- » Entry level test at the beginning of course
- » Multimedia centre
- » Comprehensive and exciting year-round social programme
- » Free Wi-Fi and Internet access
- » CES online e-Learning package
- » Student counselling
- » CES welcome pack
- » 24 hour emergency help line



DUBLIN



LONDON



OXFORD



EDINBURGH



LEEDS



WORTHING



HARROGATE

“Over 39 years’ experience in helping students improve their English skills”

Standard General English Course

20 lessons per week
Beginner to Advanced

UK and Ireland

Course Fees

School	2 weeks	3 weeks	4 weeks	5 - 12 weeks	13 - 23 weeks	24+ weeks
Dublin	€552	€796	€1039	€230 p/w	€215 p/w	€195 p/w
London	£394	£584	£766	£184 p/w	£178 p/w	£173 p/w
Oxford	£394	£584	£766	£184 p/w	£178 p/w	£173 p/w
Edinburgh	£394	£584	£766	£184 p/w	£178 p/w	£173 p/w
Leeds	£354	£523	£685	£163 p/w	£157 p/w	£152 p/w
Worthing	£354	£523	£685	£163 p/w	£157 p/w	£152 p/w
Harrogate	£394	£584	£766	£184 p/w	£178 p/w	£173 p/w

Course Details

The Standard General English Course takes place all year round. Lessons are held every morning, Monday to Friday. Students are then free in the afternoons to join our exciting social programme, avail of our self-access facilities, or to explore the rich history and culture of Ireland and the UK.

Students will work on improving the skills involved with speaking, listening, reading and writing. They will improve their comprehension and communication. They will work on their linguistic knowledge; increasing their vocabulary and deepening their understanding of grammar and structure.

Courses at CES are communicative and task based, using the most up to date technology and authentic materials.

Course Timetable

School	Lessons	Time	Day
Dublin	20	9:00 - 13:00	Monday - Friday
London	20	9:30 - 13:00	Monday - Friday
Oxford	20	9:30 - 13:00	Monday - Friday
Edinburgh	20	9:30 - 13:00	Monday - Friday
Leeds	20	9:30 - 13:00	Monday - Friday
Worthing	20	9:30 - 13:00	Monday - Friday
Harrogate	20	9:30 - 13:00	Monday - Friday

Important Information

Enrolment: Every Monday

Course: All year

For students aged: 16+ years

Minimum stay: 2 weeks

Levels: 6 (Beginner to Advanced)

*There is a course registration fee of €50 for Ireland or £40 for the UK, for all students.

**UK Contact Hours p/w: 15. Ireland Contact Hours p/w: 18.33.

***Please note that Beginners' Courses are subject to demand. For Beginners' Course dates, please contact your CES school of choice directly.

Intensive General English Course

30/26 lessons per week
Beginner to Advanced

UK and Ireland

Course Fees

School	2 weeks	3 weeks	4 weeks	5 - 12 weeks	13 - 23 weeks	24+ weeks
Dublin	€660	€957	€1255	€294 p/w	€284 p/w	€273 p/w
London	£549	£821	£1081	£262 p/w	£256 p/w	£249 p/w
Oxford	£549	£821	£1081	£262 p/w	£256 p/w	£249 p/w
Edinburgh	£549	£821	£1081	£262 p/w	£256 p/w	£249 p/w
Leeds	£509	£752	£993	£239 p/w	£233 p/w	£227 p/w
Worthing	£509	£752	£993	£239 p/w	£233 p/w	£227 p/w
Harrogate	£549	£821	£1081	£262 p/w	£256 p/w	£249 p/w

Course Details

The Intensive General English Course is suitable for students who want to maximise on the work carried out in the Standard Course. This course takes place all year round, Monday to Friday.

Morning lessons follow the same programme as the Standard Course. There are also three afternoon lessons a week, focused on improving the students' speaking skills. In the afternoon lessons, students have the opportunity to improve their communicative proficiency through discussions, topical debates, authentic materials and AV technology.

Course Timetable

School	Lessons	Time	Day
Dublin	26	9:00 - 13:00	Monday - Friday
		14:00 - 16:00	Tuesday - Thursday
London	30	9:30 - 13:00	Monday - Friday
		14:00 - 16:30	Tuesday - Thursday
Oxford	30	9:30 - 13:00	Monday - Friday
		14:00 - 16:30	Tuesday - Thursday
Edinburgh	30	9:30 - 13:00	Monday - Friday
		14:00 - 16:30	Tuesday - Thursday
Leeds	30	9:30 - 13:00	Monday - Friday
		14:00 - 16:30	Tuesday - Thursday
Worthing	30	9:30 - 13:00	Monday - Friday
		14:00 - 16:30	Tuesday - Thursday
Harrogate	30	9:30 - 13:00	Monday - Friday
		14:00 - 16:30	Tuesday - Thursday

Important Information

Enrolment: Every Monday

Course: All year

For students aged: 16+ years

Minimum stay: 2 weeks

Levels: 6 (Beginner to Advanced)

*There is a course registration fee of €50 for Ireland or £40 for the UK, for all students.

**UK Contact Hours p/w: 22. Ireland Contact Hours p/w: 23.83

***Please note that Beginners' Courses are subject to demand. For Beginners' Course dates, please contact your CES school of choice directly

Combination Course

20 group lessons + 5 hours one-to-one lessons per week
Beginner to Advanced

UK and Ireland

Course Fees

School	2 weeks	3 weeks	4 weeks	extra week
Dublin	€1064	€1491	€1955	€480
London	£715	£1055	£1385	£341
Oxford	£715	£1055	£1385	£341
Edinburgh	£715	£1055	£1385	£341
Leeds	£682	£1007	£1322	£325
Worthing	£682	£1007	£1322	£325
Harrogate	£715	£1055	£1385	£341

Course Details

The Combination Course takes place all year round, Monday to Friday. Morning lessons follow the same programme as the Standard Course.

There are two afternoons a week of one-to-one lessons, designed to meet the individual requirements of students.

Prior to the first one-to-one session, students complete a Needs Analysis form. This helps teachers to plan the one-to-one lessons, according to the students' specific needs. Teachers then work closely with the student to ensure these needs are being met. All students receive a final report, detailing their progress and outlining future areas for attention.

Course Timetable

School	Lessons	Time	Day
Dublin	20 + 5 hours one to one	9:00 - 13:00	Monday - Friday
		14:00 - 16:30	two afternoons a week
London	20 + 5 hours one to one	9:30 - 13:00	Monday - Friday
		14:00 - 16:30	two afternoons a week
Oxford	20 + 5 hours one to one	9:30 - 13:00	Monday - Friday
		14:00 - 16:30	two afternoons a week
Edinburgh	20 + 5 hours one to one	9:30 - 13:00	Monday - Friday
		14:00 - 16:30	two afternoons a week
Leeds	20 + 5 hours one to one	9:30 - 13:00	Monday - Friday
		14:00 - 16:30	two afternoons a week
Worthing	20 + 5 hours one to one	9:30 - 13:00	Monday - Friday
		14:00 - 16:30	two afternoons a week
Harrogate	20 + 5 hours one to one	9:30 - 13:00	Monday - Friday
		14:00 - 16:30	two afternoons a week

Important Information

Included: 5 hours of one-to-one lessons

Enrolment: Every Monday

Course: All year

For students aged: 16+ years

Minimum stay: 2 weeks

Levels: 6 (Beginner to Advanced)

*There is a course registration fee of €50 for Ireland or £40 for the UK, for all students.

**UK Contact Hours p/w: 20. Ireland Contact Hours p/w: 23.33

***Please note that Beginners' Courses are subject to demand. For Beginners' Course dates, please contact your CES school of choice directly

Full-Time IELTS Preparation Course

IELTS™

Official Test Centre

20 IELTS lessons per week
Intermediate to Advanced

www.ieltsdublin.com

Ireland Only

Course Fees

School	2 weeks	3 weeks	4 weeks	5 - 12 weeks	13 - 23 weeks	24+ weeks	Exam Fee
Dublin	€552	€796	€1039	€230 p/w	€215 p/w	€195 p/w	€200

2018 IELTS Dublin Provisional Exam Dates

Month	Test 1	Test 2	Test 3	Test 4
January	06	13*	18*	20
February	01	3*	10*	24*
March	03	10*	15*	24*
April	07	14*	21	26*
May	05*	12	19*	24
June	02	07*	23*	30
July	07	19*	21*	28
August	02	11*	18	25*
September	08	13*	15*	29
October	11*	13	20*	27
November	01	03*	10	17*
December	01	08*	13*	15

Please note: * = Academic Module only. All other dates = Academic and General Training

Course Details

CES Dublin is an official IELTS Exam Centre. We are the only private language school in Dublin that can offer you the opportunity to study for, and sit your IELTS exam, in the same centre. IELTS exams take place here four times a month. The Full-Time IELTS Course takes place all year round, Monday to Friday. Classes take place in the mornings from 9:00 to 13:00.

For any queries regarding exam dates, bookings or fees; please contact our Examinations Manager, Paul Corbett at: ielts@ces-schools.com or +353-1-6799506.

To register for an IELTS exam with CES Dublin, it is recommended that you submit an application form at least 5 weeks before the exam date. Exam must be booked separately to the course.

Register online at www.ieltsdublin.com.

Course Timetable

School	Lessons	Time	Day
Dublin	20	9:00 - 13:00	Monday - Friday

Important Information

Top Exam Results

Included: IELTS practice exams and guidance

Enrolment: Every Monday

Course: All year

For students aged: 16+ years

Minimum stay: 2 weeks

Levels: 3 (Intermediate to Advanced)

*There is a course registration fee of €50 for Ireland or £40 for the UK, for all students.
**Ireland Contact Hours p/w: 18.33

General English + IELTS Preparation Course

IELTS™

Official Test Centre

20 GE lessons + 10 IELTS lessons (UK) / 6 hours IELTS per week (IRL)
Intermediate to Advanced

www.ieltsdublin.com/www.ieltsleeds.com

UK and Ireland

Course Fees

School	2 weeks	3 weeks	4 weeks	5 - 12 weeks	13 - 23 weeks	24+ weeks	Exam Fee
Dublin	€660	€957	€1255	€294 p/w	€284 p/w	€273 p/w	€200
London	£549	£821	£1081	£262 p/w	£256 p/w	£249 p/w	Please contact CES London
Oxford	£549	£821	£1081	£262 p/w	£256 p/w	£249 p/w	Please contact CES Oxford
Edinburgh	£549	£821	£1081	£262 p/w	£256 p/w	£249 p/w	Please contact CES Edinburgh
Leeds	£509	£752	£993	£239 p/w	£233 p/w	£227 p/w	Please contact CES Leeds
Worthing	£509	£752	£993	£239 p/w	£233 p/w	£227 p/w	Please contact CES Worthing
Harrogate	£549	£821	£1081	£262 p/w	£256 p/w	£249 p/w	Please contact CES Harrogate

Course Details

The General English and IELTS Preparation Course takes place all year round, from Monday to Friday. Morning lessons follow the same programme as the Standard Course. There are three afternoons a week of IELTS preparation lessons.

This course focuses on improving students' English, as well as on developing their exam techniques. At the end of each week, students will be given a progress test. They will also have the opportunity to sit an IELTS exam during the last week of the course (exam must be booked separately.) If the student is planning to take the IELTS exam while studying with CES, they should contact our Examinations Office on ielts@ces-schools.com for help with registration online.

Course Timetable

School	Lessons	Time	Day
Dublin	26	9:00 - 13:00	Monday - Friday
		14:00 - 16:00	Tuesday - Thursday
London	30	9:30 - 13:00	Monday - Friday
		14:00 - 16:30	Tuesday - Thursday
Oxford	30	9:30 - 13:00	Monday - Friday
		14:00 - 16:30	Tuesday - Thursday
Edinburgh	30	9:30 - 13:00	Monday - Friday
		14:00 - 16:30	Tuesday - Thursday
Leeds	30	9:30 - 13:00	Monday - Friday
		14:00 - 16:30	Tuesday - Thursday
Worthing	30	9:30 - 13:00	Monday - Friday
		14:00 - 16:30	Tuesday - Thursday
Harrogate	30	9:30 - 13:00	Monday - Friday
		14:00 - 16:30	Tuesday - Thursday

Important Information

Top Exam Results

Included: IELTS practice exams and guidance

Enrolment: Every Monday

Course: All year

For students aged: 16+ years

Minimum stay: 2 weeks

Levels: 3 (Intermediate to Advanced)

*There is a course registration fee of €50 for Ireland or £40 for the UK, for all students.

**UK Contact Hours p/w: 22. Ireland Contact Hours p/w: 23.83

IELTS EXPRESS, Super Intensive 2 week preparation course

NEW FOR
2018

20 GE lessons + 16 IELTS lessons (UK) / 26 hours IELTS per week (IRL)
Intermediate to Advanced www.ieltsdublin.com/www.ieltsleeds.com

UK & Ireland

Course Fees

School	2 weeks	Exam Fee
Dublin	€660	€200
London	£670	Please Contact CES London
Oxford	£670	Please Contact CES Oxford
Edinburgh	£670	Please Contact CES Edinburgh
Leeds	£670	Please Contact CES Leeds
Worthing	£670	Please Contact CES Worthing
Harrogate	£670	Please Contact CES Harrogate

Course Details

This course is an EXPRESS 2 week IELTS SUPER Intensive Course that will prepare your student for the IELTS exam. This course focuses on improving students' English, as well as on developing their exam techniques.

At the end of each week, students will be given a progress test. CES is the largest IELTS Test Centre in Ireland and also in the North of England. Our Teachers have been specially trained to push the student on this IELTS EXPRESS Programme up the IELTS Scale.

They will also have the opportunity to sit an IELTS exam during the last week of the course (exam must be booked separately.) If the student is planning to take the IELTS exam while studying with CES, they should contact our Examinations Office on ielts@ces-schools.com for help with registration online.

Course Timetable

School	Lessons	Time	Day
Dublin	26	9:00 - 13:00 14:00 - 16:00	Monday - Friday Tuesday - Thursday
London	36	9:30 - 13:00 14:00 - 16:30	Monday - Friday
Oxford	36	9:30 - 13:00 14:00 - 16:30	Monday - Friday
Edinburgh	36	9:30 - 13:00 14:00 - 16:30	Monday - Friday
Leeds	36	9:30 - 13:00 14:00 - 16:30	Monday - Friday
Worthing	36	9:30 - 13:00 14:00 - 16:30	Monday - Friday
Harrogate	36	9:30 - 13:00 14:00 - 16:30	Monday - Friday

Important Information

Top Exam Results

Included: IELTS practice exams and guidance

Course dates:

8 – 19 January
12 -23 February
8 – 19 October
5 – 16 November

For students aged: 16+ years

Course duration: 2 weeks

Levels: 3 (Intermediate to Advanced)

*There is a course registration fee of €50 for Ireland or £40 for the UK, for all students.

**UK Contact Hours p/w: 27. Ireland Contact Hours p/w: 23.83

Cambridge Examination Preparation Courses (FCE + CAE)

30/20 lessons per week
Upper Intermediate to Advanced

UK and Ireland

Course Fees

School	9 weeks	12 weeks	13 weeks	2018 FCE Dates (Provisional)	2018 CAE Dates (Provisional)
Dublin	€2070	€2580	€2756	08/01 - 09/03, 12/03 - 08/06, 18/06 - 24/08, 03/09 - 30/11	08/01 - 23/03, 12/03 - 08/06, 18/06 - 24/08, 03/09 - 30/11
London	£2164	£2886	n/a	08/01 - 09/03, 19/03 - 08/06, 25/06 - 24/08, 10/09 - 30/11	n/a
Oxford	£2164	£2886	n/a	08/01 - 09/03, 19/03 - 08/06, 25/06 - 24/08, 10/09 - 30/11	n/a
Worthing	£2077	£2769	n/a	08/01 - 09/03, 19/03 - 08/06, 25/06 - 24/08, 10/09 - 30/11	n/a
Harrogate	£2164	£2886	n/a	08/01 - 09/03, 19/03 - 08/06, 25/06 - 24/08, 10/09 - 30/11	n/a

Course Details

The Cambridge Examination Preparation Courses are designed to prepare students for one of the following Cambridge Exams:

- » First Certificate in English (FCE)
- » Certificate in Advanced English (CAE)

The Cambridge Exams usually take place four times a year; in March, June, August and December. Our courses are scheduled to finish on the week before the exam date.

We cannot accept a student for any exam course until CES have confirmed the student is at the required level. Every student is then appointed a tutor who continually assesses their progress with CES.

*CES Dublin and CES Harrogate are official Cambridge Exam Centres.

Course Timetable

School	Lessons	Time	Day
Dublin	20	9:00 - 13:00	Monday - Friday
London	30	9:30 - 13:00	Monday - Friday
		14:00 - 16:30	Tuesday - Thursday
Oxford	30	9:30 - 13:00	Monday - Friday
		14:00 - 16:30	Tuesday - Thursday
Worthing	30	9:30 - 13:00	Monday - Friday
		14:00 - 16:30	Tuesday - Thursday
Harrogate	30	9:30 - 13:00	Monday - Friday
		14:00 - 16:30	Tuesday - Thursday

Important Information

Top Exam Results

Included: Cambridge Practice Exams + Guidance, mentoring by tutor

Course dates: Please contact CES

Minimum stay: 9 weeks

For students aged: 16+ years

Levels: 2 (Upper Intermediate to Advanced)

*There is a course registration fee of €50 for Ireland or £40 for the UK, for all students.

**UK Contact Hours p/w: 22. Ireland Contact Hours p/w: 18.35.

***Please note there must be a minimum of 8 students for each Cambridge Examination Preparation Course.

Cambridge FCE Fast Track Preparation Course

20 lessons per week
Upper Intermediate to Advanced

Dublin

Course Fees

School	4 weeks
Adults	€1400 (includes course materials + exam fee)
Juniors	€3037 (includes Junior summer package + exam fee)

Course Details

CES is delighted to introduce our FCE Cambridge Examination Fast Track Course that will take place during the month of July (2 – 27). This course will be available for Adult and Junior students. The lessons will focus purely on getting the highest result possible in the FCE with 100% focus on preparing for FCE certificate exam that will take place at the end of the last week of the course. Every student will be appointed a tutor who continually assesses their progress with CES. Students will have additional exam practice tutorials in the final two weeks of this programme as well as simulated exam practice.

Please note that students must have minimum of Upper Intermediate level to be accepted on this course. All applicants must be pre-tested and reach the required minimum level to be accepted on the course

For further information on Junior summer package programme, please see page: 42

Course Timetable

School	Lessons	Time	Day
Adult	20	9:00 - 13:00	Monday - Friday
Junior	20	9:30 - 12:45	Monday - Friday

Important Information

Top Exam Results

Included:

Cambridge Practice Exams + Guidance, mentoring by tutor

Course dates:

2nd July - 27th July 2018

Course length: 4 weeks

For students aged:

16+ years (Adult school)

14 + years (Junior programme)

Levels:

2 (Upper Intermediate to Advanced)

*There is a course registration fee of €50 for Ireland or £40 for the UK, for all students.

**Adult school Contact Hours p/w: 18.33. Junior school Contact Hours p/w: 15.

***Please note there must be a minimum of 8 students for Cambridge Examination Preparation Course.

**** Adult students will be attending City Centre location. Junior students will be located in one of our summer centres.

General English with Business English

20 GE lessons + 10 business English lessons (UK)/
6 hours business English per week (IRL). Intermediate to Advanced

UK and Ireland

Course Fees

School	2 weeks	3 weeks	4 weeks	5 - 12 weeks	13 - 23 weeks	24+ weeks
Dublin	€660	€957	€1255	€294 p/w	€284 p/w	€273 p/w
London	£549	£821	£1081	£262 p/w	£256 p/w	£249 p/w
Oxford	£549	£821	£1081	£262 p/w	£256 p/w	£249 p/w
Edinburgh	£549	£821	£1081	£262 p/w	£256 p/w	£249 p/w
Leeds	£509	£752	£993	£239 p/w	£233 p/w	£227 p/w
Worthing	£509	£752	£993	£239 p/w	£233 p/w	£227 p/w
Harrogate	£549	£821	£1081	£262 p/w	£256 p/w	£249 p/w

Course Details

Students follow the Standard Course in the mornings and have business English lessons, three afternoons per week.

The business English lessons are designed for students who wish to improve their communicative proficiency in a business environment. The lessons can be tailored to suit the needs of any particular group of students and focus primarily in the following areas:

- » Meetings and negotiations
- » Socialising and travel
- » Oral and written presentations
- » Analysing figures and describing trends
- » Sales/Marketing/Advertising
- » Understanding cultural differences
- » Oral and written communication

Course Timetable

School	Lessons	Time	Day
Dublin	26	9:00 - 13:00	Monday - Friday
		14:00 - 16:00	Tuesday - Thursday
London	30	9:30 - 13:00	Monday - Friday
		14:00 - 16:30	Tuesday - Thursday
Oxford	30	9:30 - 13:00	Monday - Friday
		14:00 - 16:30	Tuesday - Thursday
Edinburgh	30	9:30 - 13:00	Monday - Friday
		14:00 - 16:30	Tuesday - Thursday
Leeds	30	9:30 - 13:00	Monday - Friday
		14:00 - 16:30	Tuesday - Thursday
Worthing	30	9:30 - 13:00	Monday - Friday
		14:00 - 16:30	Tuesday - Thursday
Harrogate	30	9:30 - 13:00	Monday - Friday
		14:00 - 16:30	Tuesday - Thursday

Important Information

Course: Last week in February to first week in October (CES Dublin), July & August (CES UK)

Included: Afternoon business classes

For students aged: 16+ years

Minimum stay: 2 weeks

Levels: 3 (Intermediate to Advanced)

*There is a course registration fee of €50 for Ireland or £40 for the UK, for all students.

**UK Contact Hours p/w: 22. Ireland Contact Hours p/w: 23.83

***Please note there must be a minimum of 8 students enrolled in the afternoon business classes

English for Professionals Course

One-to-One Tuition
Beginner to Advanced

UK and Ireland

Course Fees

Location	One-to-One Tuition	Two-to-One Tuition (students must book together)	Three-to-One Tuition (students must book together)
Dublin	€65 per hour	€55 per hour	€45 per hour
UK	£55 per hour	£45 per hour	£35 per hour

CES offer following specialized English Courses

International Law	Fashion	Finance
Accountancy	Retail	Engineering
Medicine	Tourism	Aviation

Course Details

CES offers one-to-one tuition for those who wish to make the maximum amount of progress, in the shortest possible time. Each of our specialised courses is designed to meet the specific needs and objectives of the participants. Clients return a completed Needs Analysis form to CES in advance of arrival, to help us prepare the most effective course for their requirements. As the client progresses, they will again have the opportunity to discuss the course details with their teacher and change the course emphasis and content, if necessary.

The use of technical manuals, seminars, lectures and company visits (when requested) will be part of the course.

CES has worked with the following Companies:



benetton. JPMorgan

PWC, Shell, Benetton, Ferrovial, Aviva, JP Morgan
Central Bank of Libya, CIEP, Toyota

*There is a course registration fee of €50 for Ireland or £40 for the UK, for all students.

**Group Prices are available upon request.

***Participants are required to complete a Needs and Analysis form before arriving.

Important Information

Included: One-to-One tuition, Specialized Courses, Language Needs Analysis Questionnaire and Company Visits.

Enrolment: Every Monday

Course: All year

For students aged: 18+ years

Minimum stay: 1 week

Levels: 6 (Beginner to Advanced)

English Language + Work Experience (unpaid)

20 lessons + 4 weeks to 6 months work placement
Intermediate to Advanced

UK and Ireland

Course Fees

School	Work Experience Placement Fee
Dublin	€450 (up to 6 months)
London	£678 (up to 6 months)
Worthing	£678 (up to 6 months)

Course Details

The English Language and Work Experience Programme is the ideal way for adult students to further improve their English language level, while developing professional skills. Through hands on experience, students will gain a greater understanding of the international business world.

This programme is perfect for university students, graduates and young professionals aged **18+ years**, who have a minimum English level of Intermediate.

Students must take a minimum 4 week English language course with CES before starting their work placement. Work placements are available for a period of at least 4 weeks and maximum 6 months.

Please note that students must provide a CV/Resume before work placement is confirmed.

Work Placement

Duration	Basis	Options
Up to 5 weeks	Unpaid	Cannot specify sector or type of work. May be in a charity organisation/shop or office. May be in the hospitality sector.
6 - 12 weeks	Unpaid	May request sector or type of work but this cannot be guaranteed. May be in a charity organisation/shop or office. Likely to be general administrative tasks.
3 - 6 months	Unpaid	May request sector or type of work. Is likely to secure placement relevant to experience/qualifications/level of English. The work will have a high degree of administrative tasks and will be a junior position.

Important Information

Included: Placement in Host Company (between 4 weeks - 6 months)

Course: All year

Enrolment: Every Monday

For students aged: 18+ years

Minimum stay: 8 weeks

Levels: 3 (Intermediate to Advanced)

*There is a course registration fee of €50 for Ireland or £40 for the UK, for all students.

**UK Contact Hours p/w: 15. Ireland Contact Hours p/w: 18.33.

***Visa restrictions may apply.

Long Term/ Multi Destination Courses

Standard/Intensive Course
Elementary to Advanced

UK and Ireland

Course Fees (Agents' Rates Only)

School	Standard Course 24 weeks	Standard Course 36 weeks	Intensive Course 24 weeks	Intensive Course 36 weeks
Dublin	€4797 + €200 exam fee (25 weeks + 10 weeks holidays)	n/a	€6716 + €200 exam fee (25 weeks + 10 weeks holidays)	n/a
London	£3909	£5737	£5589	£8204
Oxford	£3909	£5737	£5589	£8204
Edinburgh	£3909	£5737	£5589	£8204
Leeds	£3333	£4891	£5002	£7337
Worthing	£3333	£4891	£5002	£7337
Harrogate	£3909	£5737	£5589	£8204

Course Details

Our special long term rates are only available to CES agents. Bookings must be a minimum of 24 weeks to avail of these rates. Students have the opportunity to really further their English language, by learning over a greater length of time.

If long term students have the appropriate level, they are welcome to move to our IELTS/ Cambridge Examination Preparation Courses or General English with Business English!

Why not study in both the UK and Ireland?

Students can choose to book our Multi Destination option. Students can divide their stay as they wish, between our schools in the UK and Ireland. We do recommend that all students who require a visa, start their Multi Destination Course in the UK.

For students wishing to avail of the Multi Destination option, the above long term rates are used. There is also an additional £150 or €200 for the return flight between the UK and Ireland.

Please be aware that no commission is paid on the additional fee for the return flight.

Students taking the Long Term Course can also think about expanding their course with:

- » CES Self Access
- » CES Social Programme
- » IELTS Preparation
- » Conversation Classes
- » Business English
- » One-to-One Lessons

Important Information

Enrolment: Every Monday

Course: All year

For students aged: 18+ years

Minimum stay: 24 weeks

Levels: 5 (Elementary to Advanced)

*There is a course registration fee of €50 for Ireland or £40 for the UK, for all students.

**Standard Course UK Contact Hours p/w: 15. Standard Course Ireland Contact Hours p/w: 18.33.

***Intensive Course UK Contact Hours p/w: 22. Intensive Course Ireland Contact Hours p/w: 23.83.

CES/NCUK University Pre-Sessional English Programme

NEW FOR 2018

30/20 lessons per week
Pre Intermediate to Advanced

UK and Ireland

All UK Locations

Start Dates	Course Duration	Tuition Fees
2nd January- June 15th 2018	6 months (24 weeks)	£5976
26th March- June 15th 2018	3 months (12 weeks)	£3144
October 1st 2018 - December 21st 2018 and then January 7th 2019 - June 21st 2019	9 months (36 weeks) plus 2 weeks' holiday at Christmas NB: This course for a Foundation start date of September 2019	£8496

Dublin

Start Dates	Course Duration	Tuition Fees
2nd January- June 15th 2018	6 months (24 weeks)	€6552
26th March- June 15th 2018	3 months (12 weeks)	€3528
October 8th 2018 - December 21st 2018 and then January 7th 2019 - June 7th 2019	8 months (33 weeks study + 2 weeks holiday) NB: This course for a Foundation start date of September 2019	€8547

Course Details

CES is delighted to announce for 2018 new university pathway pre-sessional English language programme in co-operation with NCUK. Students will study at CES for 3, 6 or 9 months to raise their IELTS score to the level required to join our partner delivering the Northern Consortium Foundation Programme (NCUK). This will provide guaranteed access to OVER 300 University courses in universities in the UK and Ireland (subject to achieving correct IELTS and foundation results). The programme will provide expert preparation for the IELTS exam as well as giving students the academic study skills required to succeed in the further and higher education environment.

Guaranteed Progression to the following Study Centres:***

- » BSC London
- » Hampstead Chelsea Independent College
- » Mander Portman Woodward
- » Dublin International Foundation College
- » INTO Manchester

Course Timetable

School	Lessons	Time	Day
Dublin	20	9:00 - 13:00 14:00 - 16:00	Monday - Friday Tuesday - Thursday
London	30	9:30 - 13:00 14:00 - 16:30	Monday - Friday Tuesday - Thursday
Oxford	30	9:30 - 13:00 14:00 - 16:30	Monday - Friday Tuesday - Thursday
Edinburgh	30	9:30 - 13:00 14:00 - 16:30	Monday - Friday Tuesday - Thursday
Leeds	30	9:30 - 13:00 14:00 - 16:30	Monday - Friday Tuesday - Thursday
Worthing	30	9:30 - 13:00 14:00 - 16:30	Monday - Friday Tuesday - Thursday
Harrogate	30	9:30 - 13:00 14:00 - 16:30	Monday - Friday Tuesday - Thursday

Important Information

Course Dates Ireland:

2nd January- June 15th 2018
26th March- June 15th 2018
October 8th 2018- December 21st 2018 and then January 7th 2019 – June 7th 2019

Course Dates UK:

2nd January- June 15th 2018
26th March- June 15th 2018
October 1st 2018- December 21st 2018 and then January 7th 2019 – June 21st 2019

For students aged: 17+ years

Levels: 3 (Pre Intermediate to Advanced)
3.5 IELTS (9 month course) or equivalent
4.0 IELTS (6 months) or equivalent
4.5 IELTS (3 months) or equivalent

*There is a course registration fee of €50 for Ireland or £40 for the UK, for all students.

**UK Contact Hours p/w: 22. Ireland Contact Hours p/w: 22.83

*** Guaranteed progression onto the NCUK International Foundation Year is based on you achieving a minimum English Language level of IELTS 5.0 or equivalent

English and Culture, 50's + Programme

NEW FOR 2018



20 group lessons + Afternoon cultural visits
Elementary to Advanced

Course Fees

School	2 weeks
Harrogate	£695
Oxford	£695

Course Details

Based in our beautiful centres of Harrogate and Oxford these two centres are considered by many to be located in the real heart of England, small and unspoilt yet hugely popular with tourists.

This is a programme specifically focused on those who are young of heart and eager to take on new challenges and experiences. The programme is based on the time table of our Standard Course - 09.30 - 13.00 Monday to Friday and will focus on the improvement of the participant's general day to day use of the English language while also touching on areas of English life, it's history, culture and food. All areas of the English language, linguistic knowledge, vocabulary and communication will be improved through various grammar exercises.

There is a social programme included as part of this course that offers various tours and cultural experiences as well as a full day tour on the Saturday mid-course that will combine to make this an unmissable opportunity!

	Monday	Tuesday	Wednesday	Thursday	Friday	Saturday	Sunday
Harrogate	Language Class 9:30- 13:00					Full day trip to North Yorkshire Dales and Moors featuring Skipton castle	Free Day
	Lunch	Lunch	Lunch	Lunch	Lunch		
	Week 1	Orientation Tour of Harrogate town	Afternoon Tea	Half day Trip To Knaresborough	Visit to Mercer and Royal Pump Room	Visit to Principal's Petanque	
Week 2	British Art and Literature afternoon	Backstage theatre tour	Half day Trip to York	Visit to Harlow Carr	Visit to Ripley Castle	Departure	
	Monday	Tuesday	Wednesday	Thursday	Friday	Saturday	Sunday
Oxford	Language Class 9:30- 13:00					Full day trip to Stratford and The Cotswolds	Free Day
	Lunch	Lunch	Lunch	Lunch	Lunch		
	Week 1	Orientation Tour of Oxford City	Oxford Views Tour	Oxford College Tours	Bodleian Library Tour	Visit to Blenheim Palace and Gardens	
Week 2	Visit To Christchurch College	Chauffeuired Punting	Half Day Trip to Thame Market Town	Visit to Ashmolean Museum	Visit to Windsor Castle	Departure	

Important Information

There is a course registration fee of €50 for Ireland or £40 for the UK, for all students.

** UK Contact Hours p/w: 15.

*** Students who wish to change their class for any reason, can be placed in General English classes on request

**** Please note timetable is subject to change

Included: 20 lessons per week language classes and afternoon visit

Course dates:

28 May – 8 June

11 June – 22 June

24 September – 5 October

15 October – 26 October

For students aged: 50+ years

Levels:

Elementary to advanced

Students who wish to change their class for any reason, can be placed in General English classes on request

Combination English with Teacher Training Focus

20 group lessons + 5 hours one-to-one lessons per week
Beginner to Advanced

UK and Ireland

Course Fees

School	2 weeks	3 weeks	4 weeks	extra week
Dublin	€1224	€1731	€2275	€560
London	£875	£1295	£1705	£421
Oxford	£875	£1295	£1705	£421
Edinburgh	£875	£1295	£1705	£421
Leeds	£842	£1247	£1642	£405
Worthing	£842	£1247	£1642	£405
Harrogate	£875	£1295	£1705	£421

Course Details

The Combination Course takes place all year round, Monday to Friday. Morning lessons follow the same programme as the Standard Course.

There are two afternoons a week of one-to-one lessons, focused on all aspects of Teacher Training - Methodology and Language Development, CLIL, Blended learning and Language Development for Teachers. The

teacher in training can focus on all of these aspects, or can specify what section they would like to concentrate on.

Prior to the first one-to-one session, students complete a Needs Analysis form. This helps teachers to plan the one-to-one lessons, according to the students' specific needs. Teachers then work closely with the student to ensure these needs are being met. All students receive a final report, detailing their progress and outlining future areas for attention.

Course Timetable

School	Lessons	Time	Day
Dublin	20 + 5 hours one to one	9:00 - 13:00	Monday - Friday
		14:00 - 16:30	two afternoons a week
London	20 + 5 hours one to one	9:30 - 13:00	Monday - Friday
		14:00 - 16:30	two afternoons a week
Oxford	20 + 5 hours one to one	9:30 - 13:00	Monday - Friday
		14:00 - 16:30	two afternoons a week
Edinburgh	20 + 5 hours one to one	9:30 - 13:00	Monday - Friday
		14:00 - 16:30	two afternoons a week
Leeds	20 + 5 hours one to one	9:30 - 13:00	Monday - Friday
		14:00 - 16:30	two afternoons a week
Worthing	20 + 5 hours one to one	9:30 - 13:00	Monday - Friday
		14:00 - 16:30	two afternoons a week
Harrogate	20 + 5 hours one to one	9:30 - 13:00	Monday - Friday
		14:00 - 16:30	two afternoons a week

Important Information

Included: 5 hours of one-to-one lessons

Enrolment: Every Monday

Course: All year

For students aged: 16+ years

Minimum stay: 2 weeks

Levels: 6 (Beginner to Advanced)

*There is a course registration fee of €50 for Ireland or £40 for the UK, for all students.

**UK Contact Hours p/w: 20. Ireland Contact Hours p/w: 23.33

***Please note that Beginners' Courses are subject to demand. For Beginners' Course dates, please contact your CES school of choice directly

English for Teachers - Methodology and Language Development

20 lessons + afternoon programme per week
Intermediate to Advanced

Dublin, London,
Edinburgh and Worthing

Course Details

Our Methodology and Language Development course is intended for non-native English teachers who wish to refresh their own language skills and examine different teaching methods and approaches. This course provides opportunities for teachers to discuss and share ideas with colleagues from Europe and beyond.

CES has been very involved in developing and delivering further development courses through the Comenius, Grundtvig, CIEP and Saxony-Anhalt programmes. Courses at CES are eligible for Erasmus+ funding under Key Action 1.

Please email ost@ces-schools.com for more information.

Week One	Monday	Tuesday	Wednesday	Thursday	Friday
Dublin: 9:00 – 11:00 UK: 9:30 – 11:00	Introduction Ice Breakers Needs Analysis	The Eclectic Approach for Multiple Intelligences	Teaching Vocabulary and the Lexical Approach	Task Based Learning	Dealing with Pronunciation
Dublin: 11:20 – 13:00 UK: 11:20 – 13:00	Learner Styles and Thinking Skills	Integrated Skills and sub Skills	Language Development	Language Development	Teacher's Choice
13:00 – 14:00	Lunch	Lunch	Lunch	Lunch	Lunch
Dublin: 14:00 – 16:00 UK: 14:00 – 16:30	Free Afternoon/ Social Programme	British/Irish History and Politics	Free Afternoon/ Social Programme	British/Irish Culture and Idiomatic Language	Free Afternoon/ Social Programme
Week Two	Monday	Tuesday	Wednesday	Thursday	Friday
Dublin: 9:00 – 11:00 UK: 9:30 – 11:00	Language Development	Exploiting Authentic Material and Project Work	Dealing with Mixed Ability Classes	Using Websites and Other Resources	Presentation of Material and Rationales. Self- Evaluation
Dublin: 11:20 – 13:00 UK: 11:20 – 13:00	Adapting the Course Book	Music, Song and Drama in the Classroom	Language Development	Workshop: Material Design	Language Development and Course Evaluation
13:00 – 14:00	Lunch	Lunch	Lunch	Lunch	Lunch
Dublin: 14:00 – 16:00 UK: 14:00 – 16:30	Free Afternoon/ Social Programme	British/Irish Literature	Free Afternoon/ Social Programme	Blended Learning and e-Learning	Free Afternoon/ Social Programme

Course Fees		
School	1 week course	2 week course
Dublin	€350	€700
London	£290	£580
Edinburgh	£290	£580
Worthing	£290	£580
Leeds	£290	£580

Important Information	
Dublin one week: 02/07 – 06/07, 16/07 – 20/07, 30/07/ – 03/08, 13/08 – 17/08, 27/08 – 31/08	UK one week: 02/07 – 06/07, 16/07 – 20/07
Dublin two weeks: 02/07/ - 13/07, 16/07 – 27/07, 30/07 – 10/08, 13/08/ - 24/08	UK two weeks: 02/07/ - 13/07, 16/07 – 27/07
	For students aged: 21+ years
	Levels: 3 (Intermediate to Advanced)

*There is a course registration fee of €50 for Ireland or £40 for the UK, for all students.

**Please note the afternoon programme is comprised of both lectures and visits.

***Please note that our Teacher Training Courses will only take place if there is a minimum of 6 participants.

**** Please note timetable is subject to change.

Further Professional Development Course – CLIL

20 lessons + afternoon programme per week
Pre-Intermediate to Advanced

Dublin, London,
Edinburgh and Worthing

Course Details

Our CLIL course is intended for non-native teachers of other subjects who wish to develop their own English language skills and examine the methodology of CLIL - Content and Language Integrated Learning. This course provides opportunities for teachers to discuss and share ideas with colleagues from Europe and beyond.

CES has been very involved in developing and delivering further development courses through the Comenius, Grundtvig, CIEP and Saxony-Anhalt programmes. Courses at CES are eligible for Erasmus+ funding under Key Action 1.

Please email ost@ces-schools.com for more information.

Week One	Monday	Tuesday	Wednesday	Thursday	Friday
Dublin: 9:00 – 11:00 UK: 9:30 – 11:00	Introduction and Ice Breakers	What is CLIL? – Theory and Terminology	Techniques for Teaching Vocabulary in the CLIL Classroom	The Receptive Skills: Reading and Listening	Exploiting the Course Book and Authentic Material
Dublin: 11:20 – 13:00 UK: 11:20 – 13:00	Learner Styles and Thinking Skills	Classroom Language – Giving Instructions, Eliciting And Concept Checking	The Productive Skills: Speaking and Writing	Strategies for Supporting Learners	Language Development
13:00 – 14:00	Lunch	Lunch	Lunch	Lunch	Lunch
Dublin: 14:00 – 16:00 UK: 14:00 – 16:30	Free Afternoon/Social Programme	British/Irish History and Politics	Free Afternoon/Social Programme	British/Irish Culture and Idiomatic Language	Free Afternoon/Social Programme
Week Two	Monday	Tuesday	Wednesday	Thursday	Friday
Dublin: 9:00 – 11:00 UK: 9:30 – 11:00	Language Development	Assessment in the CLIL Classroom	Task Based Learning	Exploiting websites and Other Resources	Presentation of Material and Rationales. Self-Evaluation
Dublin: 11:20 – 13:00 UK: 11:20 – 13:00	Games, Activities and Drama in the Classroom	Techniques for Reviewing and Raising Awareness	Planning a CLIL Lesson	Workshop: Lesson Design	Course Evaluation and Further Professional Development Action Plan
13:00 – 14:00	Lunch	Lunch	Lunch	Lunch	Lunch
Dublin: 14:00 – 16:00 UK: 14:00 – 16:30	Free Afternoon/Social Programme	British/Irish Literature	Free Afternoon/Social Programme	Blended Learning and e-Learning	Free Afternoon/Social Programme

Course Fees

School	1 week course	2 week course
Dublin	€350	€700
London	£290	£580
Edinburgh	£290	£580
Worthing	£290	£580
Leeds	£290	£580

Important Information

Dublin one week:

02/07 – 06/07, 16/07 – 20/07,
30/07/ – 03/08, 13/08 – 17/08,
27/08 – 31/08

Dublin two weeks:

02/07/ - 13/07, 16/07 – 27/07,
30/07 – 10/08, 13/08/ - 24/08

UK one week:

02/07 – 06/07, 16/07 – 20/07

UK two weeks:

02/07/ - 13/07, 16/07 – 27/07

For students aged: 21+ years

Levels: 3 (Intermediate to Advanced)

*There is a course registration fee of €50 for Ireland or £40 for the UK, for all students.

**Please note the afternoon programme is comprised of both lectures and visits.

***Please note that our Teacher Training Courses will only take place if there is a minimum of 6 participants.

**** Please note timetable is subject to change.

Further Professional Development Course – Blended Learning

20 lessons + afternoon programme per week
Intermediate to Advanced

Dublin, London,
Edinburgh and Worthing

Course Details

This course is intended for English teachers who wish to refresh their own language skills and at the same time, examine the concept of Blended Learning. This course provides opportunities for teachers to discuss and share ideas with colleagues from Europe and beyond.

The sessions involve a variety of workshop, communicative and lecture formats.

CES has been very involved in developing and delivering further development courses through the Comenius, Grundtvig, CIEP and Saxony-Anhalt programmes. Courses at CES are eligible for Erasmus+ funding under Key Action 1.

Please email ost@ces-schools.com for more information.

Week One	Monday	Tuesday	Wednesday	Thursday	Friday
Dublin: 9:00 – 11:00 UK: 9:30 – 11:00	Introduction and Ice Breakers Learner Styles	An Overview of Blended Learning	Using Webquests in the classroom	Using websites for the Productive Skills	Teachers' Choice
Dublin: 11:20 – 13:00 UK: 11:20 – 13:00	Introduction to E-Learning and Moodle	Using websites for Language Development	Using websites for the Receptive Skills	Using CD ROMs and DVDs	Using YouTube and Mobile podcasts
13:00 – 14:00	Lunch	Lunch	Lunch	Lunch	Lunch
Dublin: 14:00 – 16:00 UK: 14:00 – 16:30	Free Afternoon/Social Programme	British/Irish History and Politics	Free Afternoon/Social Programme	British/Irish Culture and Idiomatic Language	Free Afternoon/Social Programme
Week Two	Monday	Tuesday	Wednesday	Thursday	Friday
Dublin: 9:00 – 11:00 UK: 9:30 – 11:00	Internet Based Project Work Part 1	Internet Based Project Work 2	Teachers' Choice	Workshop – A Blended Learning Lesson	Presentation of Material and Rationales. Self-Evaluation
Dublin: 11:20 – 13:00 UK: 11:20 – 13:00	Using Search Engines	Using Blogs	Language Development	Workshop – A Blended Learning Lesson	Course Evaluation and Further Professional Development Action Plan
13:00 – 14:00	Lunch	Lunch	Lunch	Lunch	Lunch
Dublin: 14:00 – 16:00 UK: 14:00 – 16:30	Free Afternoon/Social Programme	British/Irish Literature	Free Afternoon/Social Programme	e-Learning	Free Afternoon/Social Programme

Course Fees

School	1 week course	2 week course
Dublin	€350	€700
London	£290	£580
Edinburgh	£290	£580
Worthing	£290	£580
Leeds	£290	£580

Important Information

Dublin one week:

02/07 – 06/07, 16/07 – 20/07,
30/07/ – 03/08, 13/08 – 17/08,
27/08 – 31/08

Dublin two weeks:

02/07/ - 13/07, 16/07 – 27/07,
30/07 – 10/08, 13/08/ - 24/08

UK one week:

02/07 – 06/07, 16/07 – 20/07

UK two weeks:

02/07/ - 13/07, 16/07 – 27/07

For students aged: 21+ years

Levels: 3 (Intermediate to Advanced)

*There is a course registration fee of €50 for Ireland or £40 for the UK, for all students.

**Please note the afternoon programme is comprised of both lectures and visits.

***Please note that our Teacher Training Courses will only take place if there is a minimum of 6 participants.

**** Please note timetable is subject to change.

Further Professional Development Course – Language Development for Teachers

20 lessons + afternoon programme per week
Pre-Intermediate + Intermediate

Dublin, London,
Edinburgh and Worthing

Course Details

This course is intended for non-native teachers of other subjects who wish to develop their own English language skills. It is specifically aimed at teachers of other subjects, who have to teach their subjects through English.

CES has been very involved in developing and delivering further development courses through the Comenius, Grundtvig, CIEP and Saxony-Anhalt programmes. Courses at CES are eligible for Erasmus+ funding under Key Action 1.

Please email ost@ces-schools.com for more information.

Week One	Monday	Tuesday	Wednesday	Thursday	Friday
Dublin: 9:00 – 11:00 UK: 9:30 – 11:00	Introduction Ice Breakers Needs Analysis	The Present Tenses	The Past Tenses	The Perfect Aspect	Expressing Functions and Modal Verbs
Dublin: 11:20 – 13:00 UK: 11:20 – 13:00	Guided E-Learning	Classroom Language I – Classroom Management	Classroom Language II – Presenting, Eliciting and Concept Checking	Focus on Pronunciation – Phonemes, Syllable Stress and Weak Forms	Focus on Speaking I
13:00 – 14:00	Lunch	Lunch	Lunch	Lunch	Lunch
Dublin: 14:00 – 16:00 UK: 14:00 – 16:30	Free Afternoon/ Social Programme	British/Irish History and Politics	Free Afternoon/ Social Programme	British/Irish Culture and Idiomatic Language	Free Afternoon/ Social Programme
Week Two	Monday	Tuesday	Wednesday	Thursday	Friday
Dublin: 9:00 – 11:00 UK: 9:30 – 11:00	The Conditionals	Defining and Describing	The Passive Voice	Phrasal Verbs and Idioms	Accessing English at Home and Useful Websites Error analysis and Self- Evaluation
Dublin: 11:20 – 13:00 UK: 11:20 – 13:00	Focus on Speaking II	Focus on Pronunciation – Sentence Stress and Intonation	Focus on Listening	Teachers' Choice	Language Development Action Plan and Course Feedback
13:00 – 14:00	Lunch	Lunch	Lunch	Lunch	Lunch
Dublin: 14:00 – 16:00 UK: 14:00 – 16:30	Free Afternoon/ Social Programme	British/Irish Literature	Free Afternoon/ Social Programme	Blended Learning and e-Learning	Free Afternoon/ Social Programme

Course Fees

School	1 week course	2 week course
Dublin	€350	€700
London	£290	£580
Edinburgh	£290	£580
Worthing	£290	£580
Leeds	£290	£580

Important Information

Dublin one week:

02/07 – 06/07, 16/07 – 20/07,
30/07 – 03/08, 13/08 – 17/08,
27/08 – 31/08

Dublin two weeks:

02/07 – 13/07, 16/07 – 27/07,
30/07 – 10/08, 13/08 – 24/08

UK one week:

02/07 – 06/07, 16/07 – 20/07

UK two weeks:

02/07 – 13/07, 16/07 – 27/07

For students aged: 21+ years

Levels: 3 (Intermediate to
Advanced)

*There is a course registration fee of €50 for Ireland or £40 for the UK, for all students.

**Please note the afternoon programme is comprised of both lectures and visits.

***Please note that our Teacher Training Courses will only take place if there is a minimum of 8 participants.

Homestay Accommodation

UK and Ireland



Accommodation Fees

School	Rate p/w (7 nights)	Extra Night	Accommodation	Placement Fee
Dublin	€183 Single room supplement from 3rd June-23rd September: €30 p/w	€30	Monday - Friday: half board Weekend: full board	€70
London	£175 Single Room £153 Shared Room **Premium: £226 Single **Premium: £205 Shared Single/Shared room supplement from 1st July – 2nd September £20 p/w	£25 Single £22 Shared **Premium: £32 Single **Premium: £29 Shared	Half board	£55
Oxford	£175 Single Room £153 Shared Room **Premium: £226 Single **Premium: £205 Shared	£25 Single £22 Shared **Premium: £32 Single **Premium: £29 Shared	Half board	£55
Edinburgh	£175 Single Room £153 Shared Room Single/Shared room supplement from 1st July – 2nd September £20 p/w	£25 Single £22 Shared	Half board	£55
Leeds	£145 Single Room £135 Shared Room	£20 Single £19 Shared	Full board	£55
Worthing	£145 Single Room £135 Shared Room	£20 Single £19 Shared	Full board	£55
Harrogate	£148 Single Room £140 Shared Room	£20 Single £19 Shared	Monday - Friday: half board Weekend: full board (Lunches available Monday-Friday for £25 per student per week)	£55

*Please note that single rooms are subject to availability. Single rooms are not available for students aged 16-18 years (inclusive) in July and August.

** "Premium Homestay Accommodation" in London and Oxford, refers to accommodation which is within walking distance of the school.

***Students who require a special diet; such as a gluten/coeliac, lactose free or vegan, will be charged a supplement of €30 p/w (Ireland)/£20 p/w (UK).

****Please note that homestay accommodation will be €250 (Dublin) and £250 (UK) for the 1 week holiday during Christmas.

*****CES place a maximum of 4 students per homestay.

*****NB in London there is a possibility of a placement in a private home. This means that more than 4 students could be staying in one home. However, students are notified of this in their confirmation letters and could ask for it to be changed to regular homestay if necessary.

Course Details

One of the best ways for students to improve their spoken English, is to choose homestay accommodation. Family life is informal and the people are welcoming, friendly and talkative.

All CES homestays are carefully selected and regularly visited by our Accommodation Officers, to ensure consistently high standards. All CES homestays are located close to our schools or public transport links.

Students must contact both the appropriate CES office and their homestay, to confirm both flight number and time of arrival. CES can facilitate airport transfer upon request.

**Please note that if a student wishes to leave their family, at least 7 days' notice must be given to the school. If 7 days' notice is not given, one full week's accommodation must be paid.

Airport Transfers

CES Dublin Transfers: An airport transfer on arrival can be arranged for homestay accommodation. The cost for adults is €70 one-way and for juniors is €130 return. For students attending our junior schools, CES reserves the right to charge a supplement of €20 each way when a flight arrives between 11pm and 8am.

CES London Transfers:
From Heathrow or Gatwick: £115 (1 in car), £120 (2 in car), or £125 (3 in car).

CES Oxford Transfers:
From Heathrow: £135 (1 in car), £140 (2 in car), £145 (3 in car).
From Gatwick: £165 (1 in car), £170 (2 in car), £175 (3 in car)
From Stansted: £185 (1 in car), £190 (2 in car), £195 (3 in car)

CES Edinburgh Transfers:
From Edinburgh: £95 (1 in car), £60 (2 in car), £65 (3 in car).
From Glasgow: £105 (1 in car), £110 (2 in car), £115 (3 in car)

*From Glasgow Prestwick Airport: £150 (1 in car), £155 (2 in car), £160 (3 in car).
From Newcastle: £210 (1 in car), £215 (2 in car), £220 (3 in car).
From Manchester: £310 (1 in car), £315 (2 in car), £320 (3 in car)*

CES Leeds Transfers:
From Leeds Bradford: £75.
From Manchester: £125.

CES Worthing Transfers:
From Gatwick: £115 (1 in car), £120 (2 in car), £125 (3 in car).
From Heathrow: £140 (1 in car), £145 (2 in car), £150 (3 in car)
From Stansted: £175 (1 in car), £180 (2 in car), £185 (3 in car).

CES Harrogate Transfers:
From Leeds Bradford: £75.
From Manchester: £125.
From Liverpool: £145.
From Heathrow: £285.

Residential Accommodation

Ireland - CES Dublin

Crestfield/Auburn House/ Binary Hub/Dorset Point

(All year, self-catering)

Residence Fees

CES Crestfield/ Auburn House: (Self-catering)	Single room: €200 p/w Twin: €160 per person p/w
Binary Hub/ Dorset Point (Self-catering)	Single en-suite room: from €280 p/w
Accommodation Placement Fee:	€70

Trinity College /Shanowen Square

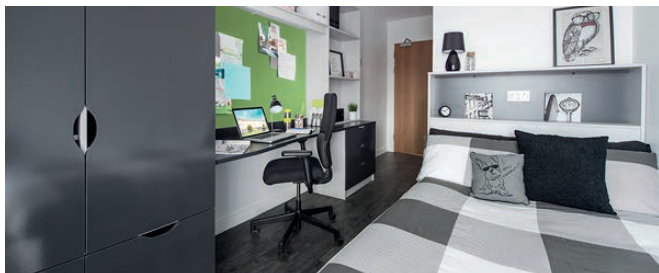
(Summer only, self-catering)

Residence Fees

Trinity College: (Self-catering)	Single room from €60 per night
Shanowen Square: (Self-catering)	Single room en-suite: €185 p/w
Accommodation Placement Fee:	€70

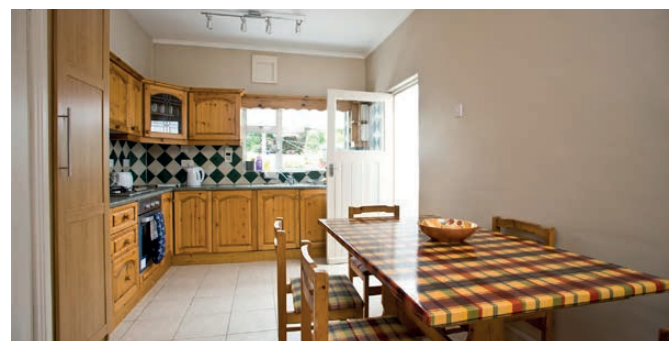
Accommodation Details

- » Single en-suite, twin en-suite, double and standard rooms are available to students.
- » Each residence has a fully fitted kitchen and communal dining area.
- » There are laundry facilities available in all residences.
- » Please note that Crestfield, Auburn House and Binary Hub are closed over Christmas.
- » Crestfield and Auburn house are both private, self-catering residences for CES students only. The residences are located approximately 4-5kms from the school and city centre.
- » Binary Hub is a self-catering city centre residence, located 20 minutes' walking distance from the school.



Accommodation Details

- » Trinity College is a self-catering, summer residence, located right in the city centre and just 5 minutes' walk from the school.
- » Shanowen Square is a self-catering, summer residence, located approximately 4-5kms from the school and city centre.



*Availability is limited

**Please note that our residences are available to students aged 18+ only.

***Please note that students must book an airport transfer on arrival, for check-in to our Auburn House and Crestfield residences. The airport transfer fee is €70 one way

Residential Accommodation

UK - CES London

Beaumont Court, Kings Cross, London

(All year, self-catering)

Residence Fees

Single en-suite room	£295 p/w (minimum stay of 4 weeks)
Accommodation Placement Fee:	£55



Accommodation Details

- » Single en-suite rooms are available.
- » The residence is comprised of flats of 5, 6 or 7 single rooms.
- » Each flat has a fully equipped kitchen and communal dining and sitting areas.
- » Free internet access.
- » There are laundry facilities available in this residence.
- » This residence has a common room, roof terrace, garden, bike storage and CCTV.
- » The residence is wheelchair accessible.
- » 15 minute walk from Kings Cross Underground station. Camden Town and Morning Crescent Underground stations are also a short walk away.
- » 40 minutes by train or tube to Wimbledon, London.



Stay Club Residence, London

(All year, self-catering)

Residence Fees

Single room	£300 p/w (minimum stay of 1 week)
Twin room	£190 p/w (minimum stay of 1 week)
Accommodation Placement Fee:	£55

Accommodation Details

- » A popular, central student residence.
- » Standard single or twin rooms available with en suite bathrooms.
- » Travel time to school: 45 minutes by public transport



*Availability is limited

**Please note that our residences are available to students aged 18+ only.

Residential Accommodation

UK - CES Edinburgh and CES Leeds

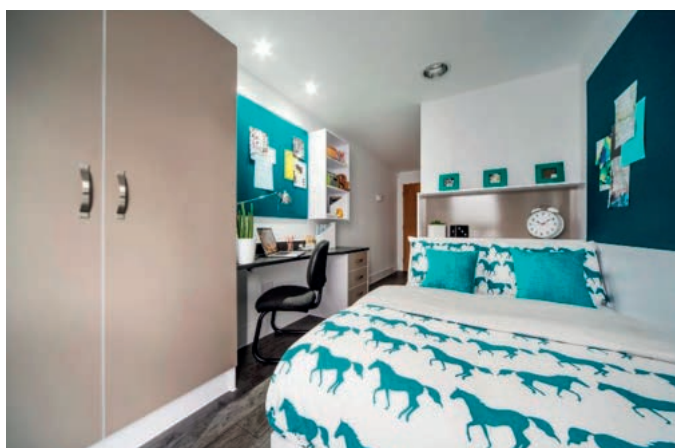


Canal Point Residences, Edinburgh

(All year, self-catering)

Residence Fees

Single en-suite room	£255 p/w
Accommodation Placement Fee:	£55



Accommodation Details

- » Canal Point residences is a self-catering residence, located in central Edinburgh.
- » It is just 10 minutes' walk from Princes Street and less than 20 minutes' walk from the school.

Liberty Park Living

(Summer only, self-catering)

Residence Fees

Single en-suite room:	£140 p/w
Accommodation Placement Fee:	£55



Accommodation Details

- » Standard rooms are all en-suite and share a communal kitchen, living area and breakfast bar.
- » Within 10 minutes' walk of CES Leeds.
- » Free internet access.
- » On-site staff and 24 hour security.
- » There are laundry facilities available in this residence.



*Availability is limited

**Please note that our residences are available to students aged 18+ only.

Junior SUMMER PROGRAMMES

Homestay & Residential



Junior English Language + Activity Summer Course

20 lessons per week
Beginner to Advanced

Ireland and UK



Course Fees

School	2 weeks	3 weeks	4 weeks	extra day
Dublin*	€1393	€2054	€2737	€100
Navan (Groups Only)	€1156	€1766	€2354	€100
Leeds	£1004	£1507	£2007	£72
Worthing	£1084	£1626	£2146	£76

Course Fees Include:

- » Full board, shared room homestay accommodation
- » 20 lessons/15 hours tuition p/w in multinational classes
- » Course book rental and additional course materials
- » Afternoon programme of sports and cultural visits
- » One disco p/w
- » One Saturday full day excursion p/w*
- » Entry level test at beginning of course and welcome pack
- » Certificate of Attendance and individual student report
- » Airport transfers (groups only - minimum of 10 students)
- » Sports day
- » Full board, single room homestay accommodation for each Group Leader per 15 students (groups only)
- » 24 hour emergency help line

Course Details

CES International Junior Summer School combines expert English language training with a full programme of sports, activities and cultural visits. The morning lessons focus on developing the core language skills; with particular emphasis given to speaking and listening. Vocabulary and pronunciation work are integrated into each session. We use role-plays, AV technology, project work, and task-based activities to develop students' communication skills. Students will also be asked to research and give weekly presentations on various aspects of Irish culture, myth and legend.

Please note: Our English Language and Activity Course in Navan is for GROUPS through agents only. Includes private transport.

*There is a course registration fee of €50 for Ireland or £40 for the UK, for all students.

** Junior Programme in Dublin includes 1 paid evening activity per week.

***Please note that groups arriving or departing on a Saturday will miss one full day excursion.

****The price of an extra Group Leader is €210 per week.

*****The price of a return airport transfer for individual junior students is €130.

*****Ireland Contact Hours per week: 15.

*****CES cannot guarantee specific centre requests for groups but will do our best.

UK locations: Under certain circumstances and only as part of a group we can accept from 11 years of age

Important Information

Dublin course dates:
18th June - 17th August 2018

Navan course dates:
25th June - 27th July 2018

Leeds course dates:
25th June - 10th August 2018

Worthing course dates:
18th June - 17th August 2018

Enrolment for individuals:
Every Monday

Enrolment for groups: Any day

Class Times: 9:30 – 12:45 Mon – Fri

For students aged
14 - 17 years (Dublin), 12 – 17 years (UK)

Minimum stay: 2 weeks

Levels: 6 (Beginner to Advanced)

Class size:
Maximum of 15, average of 12





Edinburgh Junior Summer Homestay and Residential Programme

20 lessons per week
Beginner to Advanced

Edinburgh, UK



Course Fees

School		2 weeks	3 weeks	4 weeks
Agents' Nett Rates, Groups Only	Residential Homestay	£1484 £980	£2205 £1449	£2918 £1910
	Individual Gross Rates	£1855 £1225	£2756 £1811	£3647 £2387

Course Fees Include:

- » EITHER Full board, residential (single or shared room) Accommodation at Pollock Campus
- » OR Full board, shared room homestay with specially selected Scottish host families
- » 20 lessons/15 hours tuition p/w in multinational classes
- » Course book rental and additional course materials
- » Afternoon programme of sports and cultural visits
- » One Saturday full day excursion p/w*
- » Entry and exit level test and welcome pack
- » Certificate of Attendance and individual student report
- » Airport Transfers from Edinburgh airport (groups only)
- » Please contact CES Edinburgh for individual airport transfer rates from other airports*
- » Examination preparation classes on request
- » 24 hour emergency help line

Course Details

Edinburgh is the second most visited city in the UK and the capital of Scotland. As a centre of culture and history, which is close to the sea, forest and mountains. Edinburgh is a perfect destination for junior students of all ages! The CES Edinburgh summer school is located in St Gillespie's high school premises and our programme of activities is designed to ensure the students see as much of the city as possible. Our summer school team will deliver a course focusing on Scottish history, culture and international communication.

*There is a course registration fee of €50 for Ireland or £40 for the UK, for all students.
 **Please note that groups arriving or departing on a Saturday will miss one full day excursion.
 ***Please contact CES for extra costs for other airports.
 ****UK Contact Hours per week: 15
 *****Please note that airport transfers for individuals will be quoted for separately.
 UK locations: Under certain circumstances and only as part of a group we can accept from 11 years of age



Important Information

Course dates:
25th June - 10th August 2018

Enrolment: Any day

Class times:
09:30-12:45, Monday - Friday

For students aged: 12 - 17 years

Minimum stay: 2 weeks



Ruskin College, Oxford Junior Summer Homestay and Residential Programme

20 lessons per week
Beginner to Advanced

Oxford, UK



Course Fees

School		2 weeks	3 weeks	4 weeks
Agents' Nett Rates, Groups Only	Residential	£1315	£1893	£2372
	Homestay	£1031	£1525	£2011
Individual Gross Rates	Residential	£1643	£2366	£2965
	Homestay	£1288	£1906	£2513

Course Fees Include:

- » EITHER Full board, residential (single or shared room) accommodation at Ruskin Campus or Oxford Brookes (Wheatley) Campus
- » OR Full board, shared room host family accommodation with specially selected hosts
- » 20 lessons/15 hours tuition p/w in multinational classes
- » Course book rental and additional course materials
- » Full programme of sports and cultural visits
- » One Saturday full day excursion p/w*
- » One half-day excursion p/w and four evening activities p/w
- » Entry and exit level test and welcome pack
- » Certificate of Attendance and individual student report
- » Sports day
- » Airport Transfers from Heathrow or Gatwick (groups only.) Please contact CES Oxford for individual airport transfer rates
- » 24 hour emergency help line

Course Details

Oxford, the *City of Dreaming Spires*, has long been a favourite destination for students from around the world. Our centre in Headington; just 10 minutes by bus from the centre of Oxford; is a safe and relaxed area where the students will be able to improve their English language skills. Our campus is full of character with modern classrooms, a student canteen, comfortable rooms and extensive grounds. This centre has a maximum of 80 residential students per week. All bedrooms and canteen facilities are on the college grounds.

*There is a course registration fee of €50 for Ireland or £40 for the UK, for all students.
**Please note that groups arriving or departing on a Saturday will miss one full day excursion.
***Please contact CES for extra costs for other airports.
****UK Contact Hours per week: 15
*****Please note that airport transfers for individuals will be quoted for separately.
*****Ruskin is also available for closed groups in August. Please contact the school for group rates.
UK locations: Under certain circumstances and only as part of a group we can accept from 11 years of age

Important Information

Course dates:
25th June - 10th August 2018

Enrolment: Any day

Class times:
09:30-12:30, Monday - Friday

For students aged: 12 - 17 years

Minimum stay: 2 weeks

Levels:
6 (Beginner to Advanced)

Class Size:
Maximum of 15, average of 12

Junior Super Intensive Summer Course

26 lessons per week
Beginner to Advanced

Dublin, Ireland
Leeds and Worthing, UK



Course Fees

School	2 weeks	3 weeks	4 weeks
Dublin	€1603	€2369	€3157
Leeds	£1161	£1743	£2323
Worthing	£1241	£1832	£2483

Course Details

The **Junior Super Intensive Programme** offers junior students the opportunity to have a more intensive experience. CES combines expert English language training with a full programme of sports, activities and cultural visits. The morning lessons focus on developing the core language skills; with particular emphasis given to speaking and listening. Vocabulary and pronunciation work are integrated into each session.

Students will also have 3 additional afternoons classes aimed at improving their communicative proficiency through discussions, use of authentic material and technology.



Important Information

3 additional afternoon classes p/w

Dublin course dates: 18th June - 17th August 2018

Leeds course dates: 25th June - 10th August 2018

Worthing course dates: 18th June - 17th August 2018

Enrolment for individuals: Every Monday

Enrolment for groups: Any day

Class Times: 9:30 – 12:30 Monday – Friday
13:45 – 15:45 Tuesday, Wednesday, Thursday

For students aged:

14 - 17 years (Dublin), 12 - 17 years (UK)

Minimum stay: 2 weeks

Levels: 6 (Beginner to Advanced)

Class size: Maximum of 15, average of 12

FCE Fast Track Exam Preparation + Activity Programme

20 lessons per week
Upper Intermediate to Advanced

Course Fees

School	4 weeks
Dublin	€3037 (includes course material + FCE exam fee)



Course Details

CES International Junior Summer School combines expert Fast Track Cambridge FCE training with a full programme of sports, activities and cultural visits. The lessons will focus on developing the core language skills; with particular emphasis given to preparing for FCE certificate exam that will take place at the end of the last week of the course.

The package includes full board homestay accommodation, 15 morning lessons of intensive FCE preparation classes that will be followed by afternoon sports and cultural activities.

We cannot accept a student for any exam course until CES have confirmed the student is at the required level. Every student is then appointed a tutor who continually assesses their progress with CES.

Important Information

Top Exam Results

Included: Cambridge Practice Exams + Guidance, mentoring by tutor

Course dates: 2nd July – 27th July 2018

Minimum stay: 4 weeks

For students aged: 14 - 17 years

Levels: 2 (Upper Intermediate to Advanced)



Junior English Language + Rugby Summer Course

20 lessons per week
Beginner to Advanced

Dublin, Ireland

www.rugbyinstitute.com

Course Fees

School	2 weeks
Dublin	€1711



Course Fees Include:

- » Full board, shared room homestay accommodation
- » CES Rugby Programme (4 afternoons p/w, Tuesday - Friday at 14:00 - 16:45)
- » Certificate from the Irish Rugby Institute
- » 20 lessons/15 hours tuition p/w in multinational classes
- » Course book rental and additional course materials
- » One disco p/w
- » One Saturday full day excursion p/w*
- » Entry level test at beginning of course and welcome pack
- » Certificate of Attendance and individual student report
- » Airport Transfers (groups only - minimum of 10 students)
- » Full board, single room homestay accommodation for each Group Leader per 15 students (groups only)
- » 24 hour emergency help line

Course Details

CES and the Irish Rugby Institute (IRI) have designed a programme to appeal to the needs and requirements of aspiring rugby players across Europe. The programme is designed to help young players improve all aspects of their game; from passing, kicking and tackling to nutrition, stamina, strength and the mental side of the game.

During this programme, the CES players will also get the chance to join the young IRI players.

Please note that students taking this course must attend Mount Temple School. Students must bring their own rugby boots and gum shields/mouth guards.

Rugby is a tough physical sport and CES cannot accept responsibility for students missing days on the course due to injury or sprains.

*There is a course registration fee of €50 for Ireland or £40 for the UK, for all students.
**Please note that groups arriving or departing on a Saturday will miss one full day excursion.
***The price of an extra Group Leader is €210 per week.
****The price of a return airport transfer for individual junior students is €130.
*****Ireland Contact Hours per week: 15
*****Please note that this course will only take place if there are a minimum of 8 participants. CES reserves the right to cancel this course up to 2 weeks prior to start date and to move the student to the English Language + Activity Course, if the minimum number hasn't been reached.
*****CES cannot guarantee specific centre requests for groups but will do our best.

Important Information

Included: 4 afternoons of Rugby Training p/w

Course dates:
2nd July - 13th July 2018
16th July - 27th July 2018

Class times: 9:30 – 12:30, Monday - Friday

For students aged: 14 - 17 years

Minimum stay: 2 weeks

Levels: 6 (Beginner to Advanced)

Class size:
Maximum of 15, average of 12



CES and Worthing College – Mini College Programme

Intermediate to Advanced

Worthing, UK

www.worthing.ac.uk

Course Fees

Worthing College	2 weeks	3 weeks	4 weeks
Nett Rates	£962	£1,430	£1,898



*Groups are based on 8-10 students, with 1 free group leader per 10 students. Smaller groups will be accepted but the price of the group leader will be £150 per week.

Course Fees Include

- » Full board, single room homestay accommodation for individual students
- » If coming as part of a group, all students will be placed in twin room homestay accommodation. The students will be placed with CES Worthing's homestays.
- » 16 hours direct contact tuition in group classes
- » 1 hour of tutor assistance, starting from 08.30-16.00 Monday to Friday
- » Self-study facilities available all day
- » Course materials
- » Students can book extra one-to-one lessons in the CES adult school, located close to Worthing College, from Monday to Friday. Prices are available upon request.
- » All tours and excursions are organised through CES Worthing and Discovery Tours, and are priced separately. For groups, an organised social programme can be booked in advance.
- » Airport transfers can be organised and are based on the regular airport transfer fees.

Course Details

British State Colleges offer a distinctive style of education and act as an ideal stepping-stone towards university life. Students at college in the UK learn the skills required for independent study, whilst attending classes and being supported by top-class teachers and tutors. During the programme, international students will spend 2, 3 or 4 weeks integrating into college life. They will study academic subjects of their choice alongside local students. They will have the opportunity to get involved in a broad range of extra-curricular clubs and societies. They will also have the freedom to use all of the world class facilities available at the college. The programme puts an emphasis on independence and developing the maturity of participating students. This is an ideal experience for anyone considering a longer State College programme, or anyone who might be progressing onto university in the near future.

Homestay accommodation is provided, in local English-speaking families. This provides further opportunity for students to develop their English language skills in a real world environment.

Students can also join high school classes for short courses, of a minimum 2 weeks. For these short courses, students will be offered places in three subject areas: Maths, Science, Social Science and English classes. Other subjects will be considered subject to classroom space. Arts subjects (Fine art, Photography, Textiles) are not suitable for short courses.

*There is a course registration fee of €50 for Ireland or £40 for the UK, for all students.

Important Information

Course dates:

18/9/17 – 20/10/17
 30/10/17 – 8/12/17
 8/1/2018 – 16/2/2018
 26/2/2018 – 6/4/2018
 23/4/2018 – 25/5/2018

Class times:

08:30 - 16:00, Monday to Friday

For students aged: 16+ years

Minimum stay: 2 weeks

Levels: 3 (Intermediate to Advanced)

High School Placement Course

UK and Ireland

Course Fees

School	1 Academic Year Nett Fee
U.K	From £16,480 nett
Dublin	From €14,420 nett

Course Details

The CES High School Placement Course gives participating students the opportunity to study in an Irish or UK Secondary School (High School). This course is available at a variety of carefully selected private and state schools in both countries. Through living and studying in Ireland, or the UK, students have the chance to become fluent in English.

Private School Programme

British and Irish private schools have a worldwide reputation for excellence and unequalled academic results. They provide an outstanding education preparing their students for the challenges of adult life. Most students reach high levels of achievement and usually go on to study in university.

This programme provides:

- » The opportunity for students between 7-18 years, from all over the world, to become fluent in English
- » Boarding and day places in a choice of many different, excellent private schools
- » Carefully selected homestay accommodation for those in day places
- » Guardianship, tuition and four airport transfers
- » Assistance with school uniforms and textbooks
- » Regular reports to parents
- » Assistance with GNIB documents and Re-Entry Visas

- » Provision of family accommodation during holidays where required
- » 24 hour emergency help line

State School Programme

State Schools participating in this programme are selected carefully on the record of their academic achievement and their enthusiasm in accepting students from other countries.

This programme provides:

- » Choice of many excellent schools throughout England, Ireland and Wales
- » Local co-ordinator who will maintain close contact with the student
- » Carefully selected homestay accommodation, close to the school
- » Opportunity for students aged 11-17 from all EU countries, to become fluent in English
- » Guardianship, tuition and four airport transfers
- » Assistance with school uniform and textbooks
- » Regular reports to parents
- » Assistance with GNIB documents and Re-Entry Visas
- » Provision of family accommodation during holidays where required
- » No deadline to book into this course
- » 24 hour emergency help line

For more information please contact info@ces-schools.com

*There is a course registration fee of €50 for Ireland or £40 for the UK, for all students.

Junior Stage Programme Winter Option - CES Dublin

Beginner to Advanced

Dublin, Ireland

Course Fees (Nett Rates, Groups Only)

School	6 nights/7 days	7 nights/8 days	13 nights/14 days	14 nights/15 days
Dublin	€351	€376	€650	€675

Course Fees Include:

- » Full board homestay accommodation
- » Two or three students per family
- » 20 lessons/15 hours p/w in single nationality classes (Classes may take place in mornings or afternoons)
- » Course book rental and additional course materials
- » Entry level test at the beginning of the course and welcome pack
- » Certificate of Attendance and individual student report
- » Airport transfer on arrival and departure from Dublin airport
- » Full board, single room homestay accommodation for each Group Leader per 15 students
- » 24 emergency help line



Course Details

The CES Junior Stage Programme combines expert English language tuition with a fun, interesting social and cultural programme.

Classes are divided into two sessions. The first part of the class concentrates on grammar structures and writing skills. The second part of the class is designed to improve listening and oral skills. Role play, communication exercises and authentic materials are used.

Classes take place either in the morning or afternoon, from Monday to Friday.

Important Information

Course dates: January - May and September - December 2018

Class times: 9:45 - 13:00 or 14:00 - 17:15 Monday - Friday

For students aged:
14 - 17 years

Levels:
6 (Beginner to Advanced)

Class size:
Maximum of 15, average of 12

Hotel/Hostel Accommodation also available!
Please contact CES Dublin for more information and prices.

*Please note that when groups arrive mid-week, their classes will be in the afternoons.

**Ireland Contact Hours per week: 15

***CES cannot guarantee specific centre requests for groups but will do our best.

Junior Stage Programme Winter Option - CES London + CES Oxford

Beginner to Advanced

London and
Oxford, UK

Course Fees (Nett Rates, Groups Only)

School	6 nights/7 days	7 nights/8 days	13 nights/14 days	14 nights/15 days
London	£292 nett	£314 nett	£574 nett	£600 nett
Oxford	£292 nett	£314 nett	£574 nett	£600 nett

Course Fees Include:

- » Half board homestay accommodation
- » Two or three students per family
- » 20 lessons/15 hours p/w in single nationality classes (Classes may take place in mornings or afternoons)
- » Course book rental and additional course materials
- » Entry level test at the beginning of the course and welcome pack
- » Certificate of Attendance and individual student report
- » Airport transfer on arrival and departure from London Heathrow or Gatwick airports
- » Half board, single room homestay accommodation for each Group Leader per 15 students
- » 24 emergency help line



Course Details

The CES Junior Stage Programme combines expert English language tuition with an interesting social and cultural programme.

Classes are divided into two sessions. The first part of the class concentrates on grammar structures and writing skills. The second part of the class is designed to improve listening and oral skills. Role play, communication exercises and authentic materials are used.

Classes take place either in the morning or afternoon, from Monday to Friday.

*Airport transfers from Luton or Stansted airports can be arranged for an extra £20 per person.
**Please note that when groups arrive mid-week, their classes will be in the afternoons.
***UK Contact Hours p/w: 15.
****CES cannot guarantee specific centre requests for groups but will do our best.

Important Information

Course dates: January - May and September - December 2018

Class times: 09:30 - 13:00 or 13:30 - 17:00 Monday - Friday

For students aged: 14 - 17 years

Levels: 6 (Beginner to Advanced)

Class size:
Maximum of 15, average of 12

Junior Stage Programme Winter Option - CES Edinburgh

Beginner to Advanced

Edinburgh, UK

Course Fees (Nett Rates, Groups Only)

School	6 nights/7 days	7 nights/8 days	13 nights/14 days	14 nights/15 days
Edinburgh	£298 nett	£312 nett	£575 nett	£596 nett

Course Fees Include:

- » Full board homestay accommodation
- » Two or three students per family
- » 20 lessons/15 hours p/w in single nationality classes (Classes may take place in mornings or afternoons)
- » Course book rental and additional course material
- » Entry level test at the beginning of the course and welcome pack
- » Certificate of Attendance and individual student report
- » Airport transfer on arrival and departure from Edinburgh Airport
- » Full board, single room homestay accommodation for each Group Leader per 15 students
- » 24 emergency help line

Course Details

The CES Junior Stage Programme combines expert English language tuition with an interesting social and cultural programme.

Classes are divided into two sessions. The first part of the class concentrates on grammar structures and writing skills. The second part of the class is designed to improve listening and oral skills. Role play, communication exercises and authentic materials are used.

Classes take place either in the morning or afternoon, from Monday to Friday.



Important Information

Course dates: January - May and September - December 2018

Class times: 09:30 - 13:00 or 13:30 - 17:00 Monday - Friday

For students aged:
12 - 17 years

Levels:
6 (Beginner to Advanced)

Class size:
Maximum of 15,
average of 12

Hostel Accommodation also available!
Please contact CES Edinburgh for more information and prices.

*Airport Transfers from Glasgow Airport can be arranged for an extra £25 per person.
**Please note that when classes arrive mid-week, their classes will be in the afternoons.
***UK Contact Hours p/w: 15.
****CES cannot guarantee specific centre requests for groups but will do our best.

Junior Stage Programme Winter Option - CES Leeds & Worthing

Beginner to Advanced

Leeds and
Worthing, UK

Course Fees (Nett Rates, Groups Only)

School	6 nights/7 days	7 nights/8 days	13 nights/14 days	14 nights/15 days
Leeds	£272 nett	£286 nett	£524 nett	£544 nett
Worthing	£272 nett	£286 nett	£524 nett	£544 nett

Course Fees Include:

- » Full board homestay accommodation
- » Two or three students per family
- » 20 lessons/15 hours p/w in single nationality classes (Classes may take place in mornings or afternoons)
- » Course book rental and additional course materials
- » Entry level test at the beginning of the course and welcome pack
- » Certificate of Attendance and individual student report
- » Airport transfer on arrival and departure from Leeds or Manchester airports (CES Leeds), London Heathrow or Gatwick airports (CES Worthing).
- » Full board, single room homestay accommodation for each Group Leader per 15 students
- » 24 emergency help line

Course Details

The CES Junior Stage Programme combines expert English language tuition with an interesting social and cultural programme.

Classes are divided into two sessions. The first part of the class concentrates on grammar structures and writing skills. The second part of the class is designed to improve listening and oral skills. Role play, communication exercises and authentic materials are used.

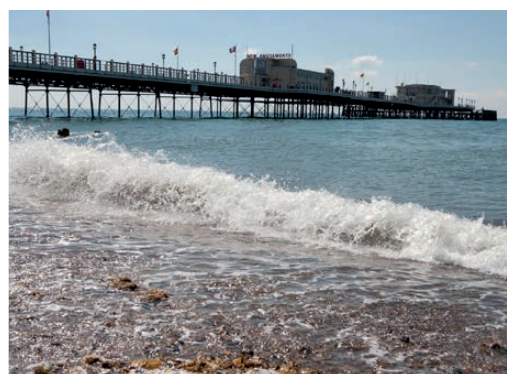
Classes take place either in the morning or afternoon, from Monday to Friday.

*Airport transfers from London Airports can be arranged for CES Leeds. Prices vary according to group. Please contact CES Leeds. Airport transfers from Luton or Stansted airports can be arranged for an extra £20 per student for CES Worthing.

**Please note that when groups arrive mid-week, their classes will be in the afternoons.

***UK Contact Hours per week: 15.

****CES cannot guarantee specific centre requests for groups but will do our best.



Important Information

Course dates: January - May and September - December 2018

Class times: 09:30 - 13:00 or 13:30 - 17:00 Monday - Friday

For students aged: 12 - 17 years

Levels: 6 (Beginner to Advanced)

Class size: Maximum of 15, average of 12

Junior Stage Programme Winter Option – CES Harrogate

Beginner to Advanced

Harrogate, UK

Course Fees (Nett Rates, Groups Only)

School	6 nights/7 days	7 nights/8 days	13 nights/14 days	14 nights/15 days
Harrogate	£272 nett	£286 nett	£524 nett	£544 nett

Course Fees Include:

- » Half board homestay accommodation
- » Two or three students per family
- » 20 lessons/15 hours p/w in single nationality classes (Classes may take place in mornings or afternoons)
- » Course book rental and additional course materials
- » Entry level test at the beginning of the course and welcome pack
- » Certificate of Attendance and individual student report
- » Airport transfer on arrival and departure from Leeds Bradford or Manchester airports
- » Half board, single room homestay accommodation for each Group Leader per 15 students
- » 24 emergency help line

Course Details

The CES Junior Stage Programme combines expert English language tuition with an interesting social and cultural programme.

Classes are divided into two sessions. The first part of the class concentrates on grammar structures and writing skills. The second part of the class is designed to improve listening and oral skills. Role play, communication exercises and authentic materials are used.

Classes take place either in the morning or afternoon, from Monday to Friday.



Important Information

Course dates: January - May and September - December 2018

Class times: 09:30 - 13:00 or 13:30 - 17:00 Monday - Friday

For students aged: 12 - 17 years

Levels: 6 (Beginner to Advanced)

Class size: Maximum of 15, average of 12

*Airport transfers from London Airports can be arranged for CES Harrogate. Prices vary according to group. Please contact CES Harrogate.

**Please note that when groups arrive mid-week, their classes will be in the afternoons.

***UK Contact Hours per week: 15.

****CES cannot guarantee specific centre requests for groups but will do our best.

The following is an outline of the terms and conditions for bookings and payments for Agents and representatives of Centre of English Studies. The purpose of this list is to outline our conditions clearly and concisely and thereby avert misunderstandings. The Term "Agent" refers to any intermediary representing Centre of English Studies. Any disputes relating to accounts or services provided will, where necessary, be heard in the courts in the Republic of Ireland or the UK where the bulk of the service is carried out.

Enrolling on a Course

Where possible we ask that Agents complete the CES Registration Form. The CES Registration Form requests information on personal details, course, level, arrival information, transfer details and accommodation details. We would ask that Agents complete this form, or assist their clients to do so.

Booking and Paying for a Course

There is a registration fee of €50 for Ireland and £40 for the UK, for all students.

Group Bookings - a 20% deposit is requested at time of booking with the remaining balance due for payment 2 weeks prior to arrival.

Individual Bookings - a deposit of €250 (Ireland)/ £200 (UK) is required at time of booking with the remaining balance due for payment 2 weeks prior to arrival.

CES will then send Agents an e-mail, indicating the price of the course and accommodation and any additional services requested, with the commission already deducted. The total invoice will show the amount due.

For some countries' visa applications, full payment is required in advance before acceptance letters are issued.

Payment Procedure

IRELAND:

1. By bank transfer or credit card through flywire, our preferred payment provider. To register and make a payment go to www.ces-dublin.flywire.com to begin the payment process. [flywire handling fees will be advised at the time of payment].
2. By bank transfer in EURO directly into CES bank account:
Bank Name: AIB.
Bank Address: 7-12 Dame Street, Dublin 2, Ireland.
Account Name: Centre of English Language Studies Ltd
IBAN: IE97AIBK93208688887063
BIC: AIBKIE2D
Account Number: 88887063
Sort Code: 93 20 86
[please add €30 to cover bank charges]

UK:

1. By bank transfer or credit card through flywire, our preferred payment provider. To register and make a payment go to www.ces-uk.flywire.com to begin the payment process. [flywire handling fees will be advised at the time of payment].
2. By bank transfer in GBP directly into CES bank account:
Bank Name: National Westminster Bank.
Bank Address: 27 South Street, Worthing, West Sussex, BN11 3AR.
Account Name: Centre of English Studies Ltd
IBAN: GB33NWBK60243174638459
BIC: NWBKGB2LXXX
Account Number: 74638459
Sort Code: 60 24 31
[please add GBP15 to cover bank charges]

Please note any invoices paid directly to CES by credit card will be subject to a total credit card surcharge of 2%

****Please ensure when making a payment to include the invoice number and student name or number****

Commission

Individual Bookings - Commission is paid in two ways: 1) Net invoice method or 2) Retrospective Commission method. CES invoice the Agent, who is paid the gross price by the client and then pays the nett invoice fee to CES. Commission is calculated on our Public Price List and is paid only on Tuition Fees for Adults and on our total package price for Juniors.

Retrospective Commission Method

Clients are invoiced for the gross amount and commission is paid on Adult Tuition Fees and Junior Package Price. Deposits must be paid for students booked by Agents on the retrospective method. The Agents details must be clearly marked on each booking at the time of booking for commission purposes.

Group Bookings - Special group rates are agreed with Agents by negotiation. It is important to note that should this group not reach the number agreed upon, this will automatically invalidate the fee agreed and a sliding scale will then apply. CES will provide this sliding scale upon receiving a group booking. CES requires a 20% deposit on each group booking. Bookings will not be confirmed until the deposit, has been received by CES. It is important to note that deposits must be paid by the end of March 2017. **Balance must be received 2 weeks prior to the groups arrival.** Groups will be assigned to chosen centres on a first-come, deposit-paid basis. Failure to meet the terms outlined can lead to cancellation. CES reserves the right to close bookings once we have reached our quota in each Centre.

Arrivals

Group quotes include one group transfer on arrival and one group transfer on departure. Regarding flights arriving between midnight and 6am or delayed flights, CES reserves the right to hold students until 7am. *Small groups or individual students booked as part of a group and arriving separately to the group will be charged a transfer fee.*

If groups are arriving and departing to/from their accommodation at unsociable hours due to flight arrival or departure times CES reserves the right to charge a supplement fee to cover this.

Pricing

CES requires Agents to submit their price lists.

Misrepresentation

It is the responsibility of Agents promoting CES to give a true and accurate description of our programmes. Any such description must be submitted to the CES Marketing Department before printing. CES reserves the right to refuse bookings from an Agent who is misrepresenting our courses.

Adult Groups

Ireland - Accommodation is half-board from Monday to Friday and full-board at the weekends. If full board accommodation is required from Monday to Friday, CES Dublin can arrange this at an additional cost of €40 per person p/w.

UK - Groups attending CES Wimbledon or Oxford, who wish to have full-board, will have to pay an additional £30 per person p/w. Worthing and Leeds are full-board all week.

CES reserves the right to terminate the contract in the following circumstances:

- The unruly behaviour of a student.
- Vandalism by a student.
- The committing of a criminal offence on the part of a student.
- In circumstances where the accommodation and facilities offered by CES are unsuitable to the special needs of a student.
- In circumstances where the behaviour and conduct of a student is such as to adversely affect the proper administration of the School.
- Where a medical condition needing special medicine and care is not advised on the Registration Form or when the booking is made.

Insurance

Students are not insured by the School, or by the host family, against illness, theft or loss of personal effects. Therefore the school accepts no responsibility in the event of such occurrence. Personal insurance cover is highly recommended.

Insurance should cover the loss of personal possessions such as laptops, cameras, and mobile phones as well as the loss of tuition fees if a student decides to cancel their course or return home early.

CES does not assume any liability for loss, delay or accident of any kind whatsoever which may occur due to the fault or negligence of any company, hotel proprietor, campus, hostel or any other persons carrying out ancillary arrangements.

Medical Insurance

IRELAND:

Medical Insurance can be arranged at a cost of €110 per annum.

UK:

If you are to travel as part of a group to a Centre of English Studies in the UK we can help you arrange insurance as part of your package price.

We advise all clients to take out full medical insurance prior to their arrival. CES cannot be held responsible for medical costs incurred if a student does not specifically request medical insurance cover. Citizens of the European Union countries should bring the EHIC card with them.

Adult Classes

At peak times of the year, adult classes can take place at alternative premises other than our main teaching centres.

Junior Groups (Winter)

Where groups book mid-week to mid-week, it may not be possible to provide classes on the Monday and Tuesday of their last week. Additional tuition will be given in lieu of this during the afternoon period.

Group Leaders

Group Leaders will be supplied with a Group Leader Handbook, which outlines their duties. It is important that Group Leaders read this handbook carefully. Group Leaders are expected to attend the centre each day and to accompany their group on all social and cultural excursions and activities. Accommodation will be full-board in Dublin, Worthing and Leeds and half-board in Wimbledon and Oxford. In the peak month of July it may not be possible to provide single room accommodation for Group Leaders. It is not feasible for a Group Leader with a group at a Junior suburban centre to attend an Adult / Teachers Course at the city centre Adult School. We advise all Group Leaders to bring a mobile phone with them and to give this number to the centre principal in case of emergency. The host family phone is there for students to contact the Group Leader. The phone can be used in emergency situations only.

In the UK, for each group leader, Centre of English Studies must receive prior to arrival, a declaration of suitability to work with children from the agent or group organiser. Centre of English Studies will also forward all medical and consent to travel forms in advance of arrival for completion by parents/guardians.

Phone Calls

Students can only make emergency phone calls from the host family telephone under supervision. Agents will be responsible for recouping costs of calls made without permission.

Text Books (Adults)

Text books are not included in our fee and cost approximately €35 (Ireland)/£35 (UK). Agents who wish to include the book must advise CES so that the cost of the book will be added to each invoice. Book rental may be organised for groups only.

Accommodation

It is important that Agents make special requests (i.e. no pets, vegetarian, etc.) on their initial booking. It is too late to make these requests after students have been placed. Where a number of special requests are made for one student, CES reserve the right to fulfil what we feel to be the most important request. Agents should advise CES of any special dietary needs, such as lactose intolerance, gluten intolerance, coeliac or vegan. There will be an extra charge for students requesting a special diet of approximately €30 (Ireland)/ GBPE20 (UK) p/w.

Smoking

Smoking is not permitted in any public buildings in Ireland or England (schools, residences, etc.). It is not acceptable to smoke in a host family home.

Public Holidays

CES will be closed on the following Public Holidays:

IRELAND - Please note that the school will be closed on the following dates: 01/01, 19/03, 30/03, 02/04, 07/05, 04/06, 06/08, 29/10, 21/12/18 - 02/01/19

UK - Please note that the school will be closed on the following dates: 01/01, 30/03, 02/04, 07/05 (CES England only), 28/05 (CES England only), 27/08 (CES England only), 21/12/18 - 02/01/19

When public holidays occur on a Monday, students will begin their course on a Tuesday. No extra classes will be arranged to make up group lessons missed on public holidays and there is no refund of fees or credit given.

Please note there is no refund for clients who downgrade from Intensive to Standard Course during the first four weeks of their stay. After the first four weeks the fee can be refunded through the Agent at the discretion of a Director of CES.

Beginners arriving on dates other than the published start dates for beginners may have class in the afternoon, or at the lowest level operating at that time, or must take individual tuition. It may be necessary for absolute beginners to have one-to-one tuition until they reach a suitable level. Their group class fee will be offset against these charges.

Cancellation & cancellation fees

All cancellations must be notified in writing.

Group Bookings

1. Notice provided of up to 14 days prior to arrival date – cancellation fee of deposit paid.
2. Notice provided of less than 14 days prior to arrival – no refund given.

Individual Bookings

1. Accommodation Fees - notice provided of 2 weeks - full refund given.
2. Tuition and other fees:-
 - 2.1 Notice provided of up to 14 days prior of the arrival date - cancellation fee of €250 (Ireland)/GBPE200 (UK).
 - 2.2 Notice provided of less than 14 days prior to arrival - no refund given.

Where a visa has been refused, CES will refund fees to the Agent on receipt of evidence of the visa refusal plus the refusal number. All fees which have been paid will be refunded, less the deposit paid. Where refunds are made by bank transfer, the bank charges will also be deducted from the balance.

If the intended commencement date of an English Language Programme is delayed because of visa problems, CES will not adjust your tuition or accommodation end date and no refund will be made.

Curtailement

There is no refund of fees for curtailment of a course after commencement.

These terms also apply to students who are part of a group. The cancellation fees will be waived if there is a replacement student.

Independent Course Selection Arrangements

If, for any reason, students make their own arrangements for further study in Ireland or UK, the contract between CES and the student will be considered broken and no refund will be made.

Expulsion

No refund.

General Conditions

- CES does not accept responsibility for costs incurred due to flight delays, (i.e. accommodation etc.)
- CES does not take responsibility for any loss or theft of belongings.
- Students are expected to have appropriate medical and baggage insurance.
- There is no refund of fees for days missed during the course, or for late arrival or early departure, or for public holidays.
- There is a fee of €30 (Ireland)/£15 (UK) on all payments made by bank transfer.
- CES reserves the right to cancel all arrangements and bookings without prior notice if our payment conditions are not met. All operators working with CES will be deemed to have agreed to these conditions without variation once they have made a booking.

Facebook and Social Media

CES reserves the right to expel any student found abusing or insulting any other CES student, or homestay accommodation, on any form of social media.

Legal Notice

CES reserve the right to alter and amend information contained in this handbook without notice. We reserve the right not to accept applications.

Supplements

CES reserves the right, if necessary, to add a supplement for airport transfers and tours to all students and groups.

All prices are valid until 31st December 2018.

- There is a registration fee of €50 for Ireland and £40 for the UK, for all students.
- CES **require** the date of birth of each student **before** any registration can be confirmed.
- Students between 12 - 17 years in England and 14 - 17 years in Ireland only, are accepted on the Junior Programmes.
- Students aged 12 - 14 will be placed 2 per homestay accommodation.
- Students with special dietary or medical problems are accepted solely at the discretion of the Directors of CES. There **is** a supplementary charge for coeliac, vegetarians, vegans and students with special dietary requirements.
- CES cannot accept students with enuresis (bed-wetting).
- Junior students must purchase the special travel ticket as all afternoon visits are by public transport. The tickets are on sale at each Junior Centre.
- In the peak months of July and August CES reserve the right to place two CES students of the same mother tongue in the same homestay accommodation. CES will do everything reasonably possible to meet agents' accommodation requests. Whilst CES cannot warrant that our homestays will not take students from another source, nevertheless CES will use our best endeavours to ensure that the homestay accommodation is suitable to student requirements.
- Students who are 18 years and over must attend a CES adult course. CES does not accept students 18 years and over in Junior Courses. We reserve the right to refuse such bookings.
- CES reserves the right to charge a student €70/£50 for an unnecessary change of host family.
- All junior students' accommodation is based on shared rooms. We **do not provide single rooms** for junior students.
- All students are expected to bring a towel and toiletries with them.
- **Important:** Students attending Junior Centres must obey the CES Rules for Junior Students. Students who take alcohol or drugs will be sent home immediately at their parents' expense. There will be no refund of fees for such students. Agents will be advised of the expulsion and must make arrangements for their student(s) to return home immediately.
- Junior Students may have classes in the morning or in the afternoon at peak times during the year.
- There are no extra classes given where a bank holiday occurs during a course.
- CES has a strict anti-bullying policy regarding all forms of social media. Any student found breaking this rule can be sent home.
- The CES Junior schools will not have classes on National Bank Holidays.

Arrival and Departure of Junior Students:

- Junior students must book an airport transfer on arrival and departure.
- Students departing between 3am - 6am will be brought to the airport at 1am.

All prices are valid until 31st December 2018.

A series of 25 horizontal lines for writing.



www.ces-schools.com

www.ieltsdublin.com

www.ieltsleeds.com



DUBLIN

31 Dame Street,
Dublin 2,
Ireland.

T: +353 1 671 4233
info@ces-schools.com

LONDON

Nelson House,
271 Kingston Road,
Wimbledon SW19 3NW,
England.

T: +44 208 543 5150
wimbledon@ces-schools.com

OXFORD

Oxford House,
67 High Street,
Wheatley,
Oxford OX33 1XT,
England.

T: +44 1865 874 786
oxford@ces-schools.com

EDINBURGH

CES Edinburgh
54 Manor Place
Edinburgh
EH3 7EH
Scotland

T: +44 131 226 5004
edinburgh@ces-schools.com

LEEDS

9 Park Place,
Leeds,
LS1 2RU,
England.

T: +44 1132 427 171
leeds@ces-schools.com

WORTHING

12 Stoke Abbott Road,
Worthing,
West Sussex,
BN11 1HE,
England.

T: +44 1903 231 330
worthing@ces-schools.com

HARROGATE

8a Royal Parade,
Harrogate,
HG1 2SZ,
England.

T: +44 1423 531 969
harrogate@ces-schools.com

